



Exhibition Place

ACTION REQUIRED

Item No. 15

August 22, 2013

To: The Board of Governors of Exhibition Place

From: Dianne Young
Chief Executive Officer

Subject: **Toronto Hydro-Electric Systems Limited Easement**

Summary:

Toronto Hydro-Electric System Limited (Toronto Hydro) required the installation of underground high voltage distribution routing from the Toronto Hydro Strachan Station to the property line of Exhibition Place and then north to Liberty Village. This new service is required for the rerouting of the existing high voltage lines which must be relocated to facilitate the new GO Transit rail lines at Strachan Avenue/Liberty roadway for the Airport GO service.

Recommendation:

It is recommended that the Board:

- 1) Subject to approval of City Council, enter into an tri-partite Easement Agreement with Toronto Hydro and the City of Toronto with respect to the lands described on Appendix “A” of this report; and**
- 2) Request that Council direct that the consideration to be paid by Toronto Hydro for the easement on the Exhibition Place lands be transferred directly to Exhibition Place .**

Financial Impact:

The consideration paid by Toronto Hydro for the easement is \$99,000 that relates to the easement over the Exhibition Place lands. There is no financial impact from the approval of this report; funds received will be used to offset Exhibition Place costs associated with the easement.

Decision History:

Toronto Municipal Code Chapter 63 Exhibition Place, Governance requires that any agreements which have a term exceeding four years be approved by City Council.

Issue Background:

Toronto Hydro requires an easement over the Exhibition Place lands related to installation of high voltage lines required to serve the new GO Transit bridge/underpass at Strachan and Liberty.

Comments:

In 2011 Exhibition Place received from Toronto Hydro a proposal for the construction on Exhibition Place of new cable chambers and conduits in order to re-route existing feeders to the new GO Transit bridge on Strachan Avenue as part of the airport link which project is a priority for the 2015 Pan-Am Games. This infrastructure begins at Strachan Station on the Exhibition Place grounds, runs west under Manitoba Drive to the west side and then veers north through Parking Lot "P" and then continues north by tunneling under the CPR and TTC tracks.

In order to meet the Toronto Hydro timelines and to prevent any negative effects on Exhibition Place events, the window of opportunity for Toronto Hydro was to start construction on July 17, 2013. While Exhibition Place had a very old agreement with Toronto Hydro for the installation of high voltage lines, this 1935 agreement only allowed for the placement of services actually serving Exhibition Place and not for the installation of lines to take power sites outside the Exhibition Place grounds. In order not to delay the required work, City of Toronto Real Estate Division proceeded to grant the easement to Toronto Hydro on terms which permit Exhibition Place to be added as a party to the easement agreement at a future date once approval of the Board and City Council was obtained..

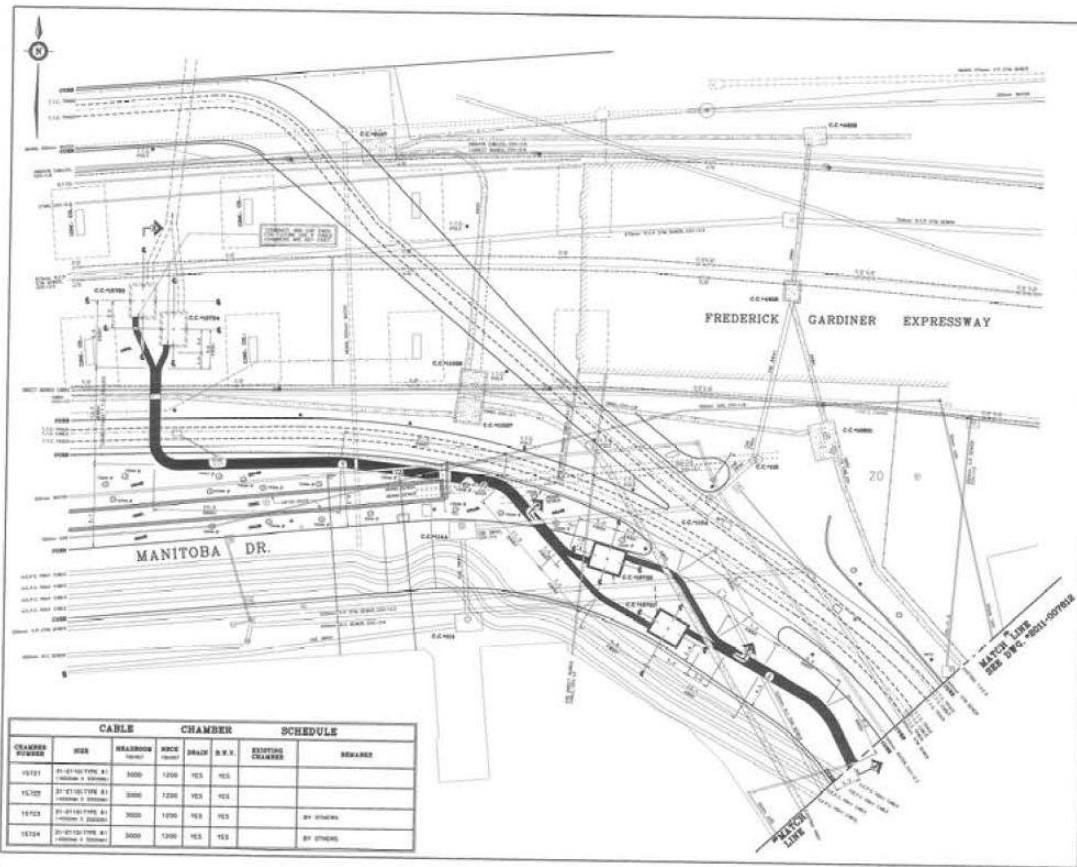
Exhibition Place will be added as a party to the easement agreement in relation of the high voltage lines located within Exhibition Place boundaries and will receive the funds from the transaction that relate to these lands. In consultation with City Finance and City Real Estate, Exhibition Place staff have proposed that any funds be directed to Exhibition Place. The funds will be included in Exhibition Place revenue and be used to offset costs related to the easement such as engineering drawings, electrical plans and disruptions, road closures, new work plan, etc. Remaining funds will be reported as year-end surplus and will therefore be transferred to the City as is consistent with prior year's surplus disposition and deposited within the Exhibition Place Conference Centre Reserve Fund.

Contact:

Mark Goss
General Manager/Operations
Tel: (416) 263-3660
Fax: (416) 263-3019
Email: mgross@explace.on.ca

Submitted by:

Dianne Young
Chief Executive Officer



CABLE	CHAMBER	SCHEDULE					
CHAMBER NUMBER	SIZE	HEADROOM	ROCK	GRAIN	D.W.T.	EXISTING CHAMBERS	REMARKS
15121	21" DI (STRUCTURE A1) (CONCRETE & STEEL)	3000	1200	YES	YES		
15122	21" DI (STRUCTURE A1) (CONCRETE & STEEL)	3000	1200	YES	YES		
15123	21" DI (STRUCTURE A1) (CONCRETE & STEEL)	3000	1200	YES	YES		BY OTHERS
15124	21" DI (STRUCTURE A1) (CONCRETE & STEEL)	3000	1200	YES	YES		BY OTHERS

REFER TO COVER SHEET DRAWING "021-00761" FOR ACCOMPANYING PROJECT DRAWINGS

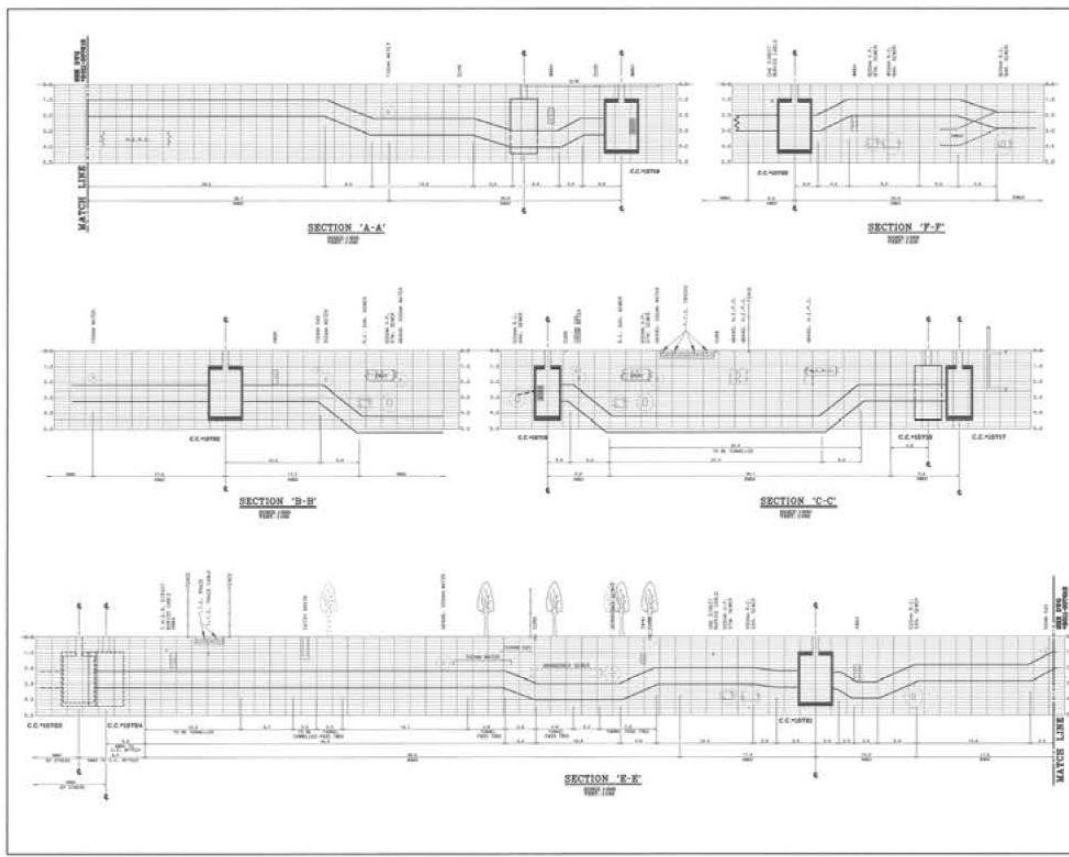
toronto hydro

DP C TORONTO

DATE: 12/17/20
 BY: C. MANN
 CHECKED: C. BELLEGAARD
 PROJECT: KING ST
 DRAWING NO: 021-00761
 SCALE: 1:500
 SHEET NO: 3 OF 4

**KING STREETCAR TO CIVIL BOARD PHASE 1
 MANITOBA DRIVE
 PROPOSED OVERGROUND CONSTRUCTION**

2011-007613



REFER TO COVER SHEET DRAWING "021-00761" FOR ACCOMPANYING PROJECT DRAWINGS

toronto hydro

DP C TORONTO

DATE: 12/17/20
 BY: C. MANN
 CHECKED: C. BELLEGAARD
 PROJECT: KING ST
 DRAWING NO: 021-00761
 SCALE: 1:500
 SHEET NO: 4 OF 4

**KING STREETCAR TO CIVIL BOARD PHASE 1
 MANITOBA DRIVE
 PROPOSED OVERGROUND CONSTRUCTION**

2011-007614