

November 4, 2010

FOR INFORMATION

To: The Board of Governors of Exhibition Place

From: Dianne Young
Chief Executive Officer

Subject: **Occupational Health and Safety Report – 3rd Quarter 2010**

Summary:

As indicated in the chart below, for the months July, August and September 2010 there was one first aid incident which required on site attention by Exhibition Place staff (i.e. bandage for small cuts) and one recordable medical aid incidents which required attention by a physician at a hospital or doctor's office. There were five lost time injuries; however, 2 of these (marked with *s) are charged against a third party and lost days (16 in total) are not included in this report.

Financial Implications:

There are no financial implications to this report.

Decision History:

As part of the 2009 Strategic Plan, the Board approved a Safety and Security Goal to "*Ensure a safe and secure environment for employees, guests and for our property and our assets.*"

Issue Background:

Pursuant to the *Occupation Health & Safety Act*, section 25(1) and 26(1), the Board as the employer is responsible for taking every precaution reasonable for the safety of the workers. Also, as a local board of a municipality, the Board is a Schedule II employer for the purposes of workers compensation.

Comments:

As indicated below, for the months July, August and September 2010 there was: one first aid incident; one recordable medical aid incidents and five lost time injuries.

Department	First Aid Calls		Recordable Medical Aids		Lost Time Injuries	
	3 rd Quarter	YTD	3 rd Quarter	YTD	3 rd Quarter	YTD
Offices – Mgt.						
Cleaners		1	1	1	1	2
HVAC						
Plumbers		1				
Mechanical						
Electrical				2	2*	1*
Labourers				1		
Carpenters					1	1
IATSE						1
Painters						
Mechanics						
Security	1	1				
Parking						
Welding					1	1
Bldg. Opers.						
DEC						
CNE						
Creative Services						
Total	1	3	1	4	3*	6*

Note: The * indicate two lost time injuries (totaling 16 days) charged against a third party.

The following chart is the 2007-2010 year end summaries with a comparison to cumulative results from the end of the 3rd Quarter.

Report Type	2007	2008	2009	3 rd Q 2010
First Aid	24	14	18	3
Medical Aid	24	16	18	4
Lost Time	12	10	18	6*

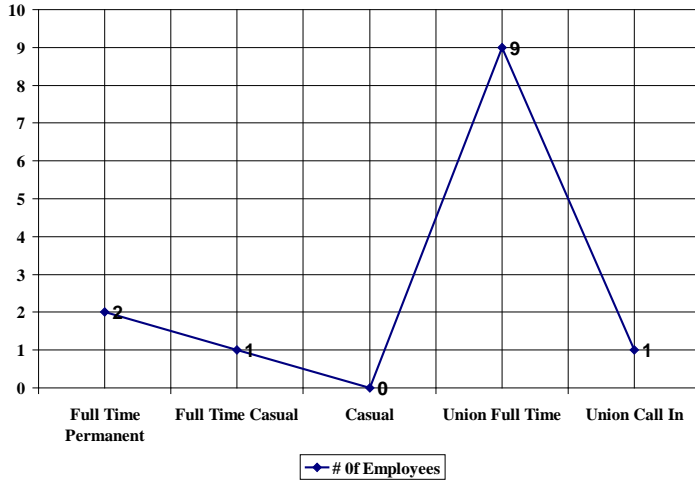
Using the total workforce hours 529,803 worked (non-management 396,943 / management 132,860) through the 3rd Quarter, the following chart is a breakdown of Lost Time Frequency/Severity statistics from 2007-2010, with a comparison to cumulative results to the end of the 2nd Quarter.

WSIB Comparison	# of LT claims	Frequency	Severity
2007	12	2.59	36.44
2008	10	2.05	28.14
2009	18	3.82	22.14
Q3 2010	6	2.30	33.2

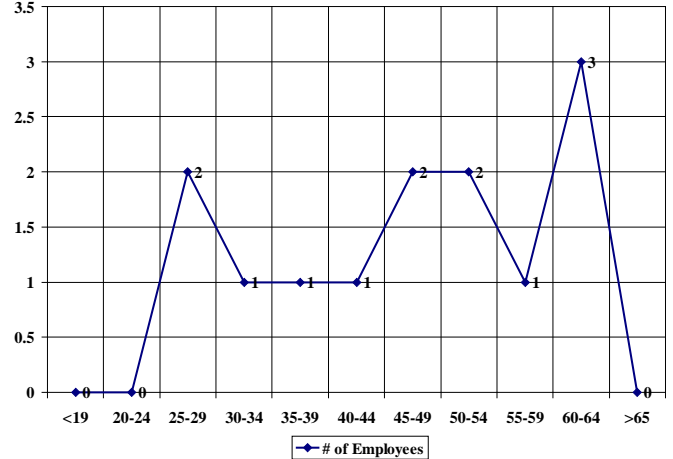
As stated in previous reports, lost time frequency / severity statistics for the City of Toronto Divisions were not available at the time of this report.

As requested by the Board, we have incorporated additional parameters (Employee Classification/Age Group/Years of Service) into this Quarterly Report. The charts below reflect the additional parameters for all incidents that happened through the 3rd Quarter 2010. If these parameters show certain trends on accidents, Exhibition Place staff will proceed to develop programs to address any issues.

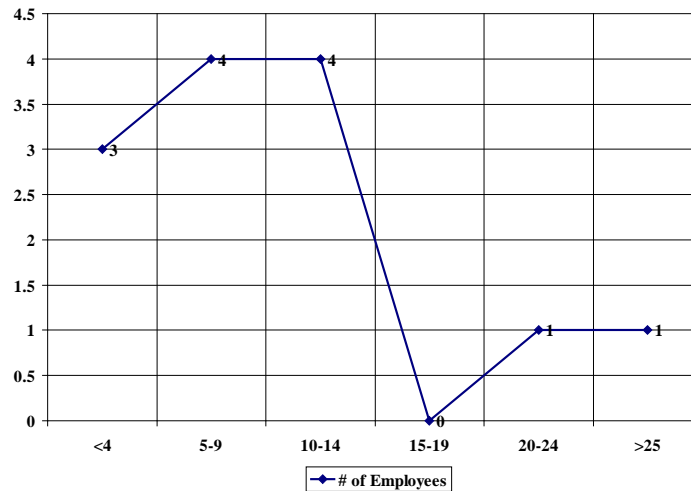
Employee Classification



Age Groups



Years of Service



This third quarter was highlighted by the annual CNE and it should be noted that none of our summer hires, which totaled 810, had reportable injuries for this event.

Contact:

Sandy Douglas Director HR,
Security, OH&S
Telephone: 416-263-3233
Fax: 416-263-3690
Email: sdouglas@explace.on.ca

Submitted by:

Dianne Young
Chief Executive Officer