



Exhibition Place

Item No. 14

August 26, 2014

To: The Board of Governors of Exhibition Place

FOR INFORMATION

From: Dianne Young, Chief Executive Officer

Subject: **Garden of the Greek Gods & Other Collections - Additional Information**

Summary:

This report provides further information as requested by the Board specifically with respect to the Garden of the Greek Gods sculptures (“Greek Gods”) and all other artworks, commemorative plaques and heritage buildings / installations / structures located at Exhibition Place (“Collections”).

Financial Impact:

There are no financial implications to this report.

Decision History:

At its meeting of April 25, 2003, the Board approved of the terms of the Lease with Muzik which was subsequently approved by City Council at its meeting of June 24, 25, and 26, 2003.

At its meeting of June 20, 2008, the Board approved the 2008 Memorandum of Understanding (MOU), between the Board and CNEA which MOU provided for the purchase at fair market value of three artifacts that were owned by the CNEA: Haines Murals; the Greek Gods; and the Satok Mural.

At its meeting of April 23, 2010, the Board approved the purchase of the Greek Gods from the CNEA at a value of \$500,000.

At its meeting of January 27, 2012, the Board approved of a Master Agreement with the CNEA and City of Toronto which agreement resulted in the independence of the CNEA from the Board and City with a term commencing April 1, 2013.

At its meeting of May 23, 2014, the Board approved a Member Motion brought by Councillor Layton which recommended that the CEO, with relevant City staff, report to the Board on the following matters:

- 1) Background information with respect to the acquisition of the Garden of the Greek Gods sculptures by Exhibition Place;
- 2) Strategies for short-term and long-term protection, promotion, and public access to the Garden of the Greek Gods sculptures located at Exhibition Place; and

- 3) The development of a public art protection and promotion strategy for all public art on the grounds of Exhibition Place.

At its meeting of June 25, 2014, the Board approved the following recommendations / motions:

- 1) In consultation with City of Toronto Heritage and City of Toronto Culture, develop a policy related to Exhibition Place Collections;
- 2) Develop a substantial web based information package related to the works of E.B. Cox at Exhibition Place and work with the Muzik tenant to develop a public access protocol for the Greek Gods;
- 3) Report on the state of the Garden of the Greek Gods Statues after consultation and review by an art conservator;
- 4) Provide more detailed options for ensuring the Garden of the Greek Gods and other artefacts with all tenant premises are publicly accessible; and
- 5) Provide options on relocating the Garden of the Greek Gods, or part thereof.

Issue Background:

While the Garden of the Greek Gods is a significant part of the Exhibition Place art collection, as detailed in the report to the Board on June 25, 2014, it is one of a vast collection of public art located both in buildings (tenanted and non-tenanted) and in outdoor locations across the grounds. The Board requested that Exhibition Place take several actions with respect to the collection and this is an information report updating the Board on those actions to date.

Comments:

Garden of the Greek Gods

Following completion of the construction of the Muzik Clubs patio, a conservator (referred by the City) was engaged to examine the sculptures and the report from that inspection is attached as Appendix A to this report. All of the issues raised by the conservator with respect to location of furniture and mulch around the sculptures was addressed immediately but Exhibition Place staff will continue to follow-up when we do our monthly inspections. Exhibition Place has also engaged a stone conservator (referred by the City) to determine actions that need to be taken to restore the damages noted by the conservator and also any other recommendations with respect to care of these sculptures which are carved from limestone which is a product that does deteriorate being outdoors.

The stone conservator will also investigate the possibility and cost of moving the sculptures from their present location. For the information of the Board, the sculptures were originally located directly on the grass in the present location in 1981. However, a study was done in 1990 to restore the statuary and install them on bases to raise them off the grass and stabilize them. Accordingly, each sculpture is now on a base that varies from 1 ½ to 4 feet deep and are attached to these bases with pins. In 1990, a major restoration of any cracks and broken areas on the sculptures were also repaired.

Recently, with the cooperation of the tenant, Muzik Clubs Inc., a public open house was held on August 8, 2014. It was communicated on the Exhibition Place website and also the Cox family members actively promoted it. Twenty-five visitors came to the open house and the Exhibition Place Archives staff along with the stone conservator was present for any questions.

Exhibition Place Collections Policy

A team has been established made up of the following staff from Exhibition Place and the City: Dianne Young; Linda Cobon, Exhibition Place Manager, Records & Archives; Lynda Macdonald, Manager – West Section, Community Planning - Toronto & East York District; Terry Nicholson, Director, Cultural Services; Wayne Reeves, Chief Curator, Museum Services; Charlene Miranda, Planner, Community Planning - Toronto & East York District; Jane Perdue, Senior Urban Designer, Public Art; and Susan Hughes, Supervisor, Special Projects, Archaeology, Heritage Preservation Services.

The first meeting of this group is scheduled for September and the plan would be to present a Collections Policy to the Board early in 2015.

Web-Based Information on the Exhibition Place Collection

We have now engaged a videographer to document the Exhibition Place collections starting with the Greek Gods which we can then edit as a two – three minute virtual tour of these sculptures that can be posted to the Exhibition Place website. Again, while we plan to video the Green Gods this Fall, the intent would be that this would be an ongoing project to get all our public art available to view on-line.

Contact:

Dianne Young
Chief Executive Officer
Tel: (416) 263-3611
Fax: 416-263-3640
Email: dyoung@explace.on.ca

Barry Briggs, B.A. Hon, M.A.C 122 Ferrier Ave. Toronto ON M4K 3H4 416.466.6133; bbriggs@sympatico.ca

Site Visit Report – 3 July 2014

Artist: Cox, E.B.

Title: The Garden of the Greek Gods

Medium: limestone

Date: approx. late 1950's

Size: varies

Signed: unknown

Description: 20 limestone sculptures plus limestone title stone; 20 bronze title plaques on separate concrete plinths.

Owner: City of Toronto

Location: Exhibition Place grounds, on south side of Horticultural Building.

Note: This is a follow up report, based on a second site visit, 3 July 2014, to the installation location after extensive renovations to the surrounding installation site (south side of the Horticultural Building). Present at site meeting: Linda Cobon and Audrey Borges of Records and Archives Exhibition Place; Barry Briggs, Consultant Conservator to Culture Affairs City of Toronto; Jim MacGregor, Exhibition Place; Zlatko Starkovski, Proprietor/Tenant of Muzik Night Club.

Individual Description of component sculptures

	TITLE	CONDITION	COMMENTS
1	Hercules	<ul style="list-style-type: none"> Spalling on calf of proper right leg Dark accretions on buttocks Scratch marks in middle of club 	<ul style="list-style-type: none"> See Image Figure 1 Images 0016 to 0024 on disk
2	Minotaur	<ul style="list-style-type: none"> Satisfactory condition 	<ul style="list-style-type: none"> Images 0026 to 0030 on disk
3	Hydra	<ul style="list-style-type: none"> Sandwiched between security fence and back of a cabana Wood chips too deep around base 	<ul style="list-style-type: none"> Images 0031 to 0039 on disk
4	Typhon	<ul style="list-style-type: none"> Satisfactory condition 	<ul style="list-style-type: none"> Images 0040 to 0046 on disk
5	Aphrodite	<ul style="list-style-type: none"> Satisfactory condition 	<ul style="list-style-type: none"> In raised bed with white sand around base Images 0040 and 0047 to 0049
6	Narcissus	<ul style="list-style-type: none"> Lounge furniture too close to sculpture Trip hazard to sculpture and public, poor visibility 	<ul style="list-style-type: none"> Potential trip hazard Images 0050 to 0054 on disk
7	Centaur	<ul style="list-style-type: none"> Satisfactory condition 	<ul style="list-style-type: none"> Images 0055 to 0063
8	Medusa	<ul style="list-style-type: none"> Satisfactory condition 	<ul style="list-style-type: none"> Images 0064 to 0066

Barry Briggs, B.A. Hon, M.A.C 122 Ferrier Ave. Toronto ON M4K 3H4 416.466.6133; bbriggs@sympatico.ca

	TITLE	CONDITON	COMMENTS
9	Mermaid	<ul style="list-style-type: none"> Serious trip hazard to both sculpture and public Abrasion on proper left shoulder and proper left underside of hair 	<ul style="list-style-type: none"> Trip hazard Images 0067 to 0074
10	The Three Graces	<ul style="list-style-type: none"> A number of cracks in lower right and right side, including cracks going across grain of stone Crack in proper right eye of left figure 	<ul style="list-style-type: none"> Cracks do not appear new but must be monitored; should be examined by a masonry conservator Images 0075 to 0086
11	Phoenix	<ul style="list-style-type: none"> Satisfactory condition 	<ul style="list-style-type: none"> Bar chairs back onto sanded area surrounding base – potential hazard? Images 0087 to 0089
12	Orpheus	<ul style="list-style-type: none"> Satisfactory condition 	<ul style="list-style-type: none"> Images 0090 to 0095
13	Cyclops	<ul style="list-style-type: none"> Damage to proper left leg, combination of long scratch with gouge/loss of stone Minor scrapes and small gouges on proper right shoulder and face/hair Sculpture may be separated from base. Crack in grout is visible around entire base; sculpture most likely secured to base by rebar rods. Rebar provides actual anchorage while the grout prevents water penetration and potential corrosion of rebar. Proper right elbow is cracked and can be easily moved – danger of detachment, if left unrepaired. Wood chips too high around base. 	<ul style="list-style-type: none"> Highest priority in terms of insecurity Images 0095 to 0105 on disk
14	Cerberus	<ul style="list-style-type: none"> Satisfactory condition 	<ul style="list-style-type: none"> Images 0106 to 0107 on disk
15	The Harpies	<ul style="list-style-type: none"> Minor scrapes on back of base Small gouges on proper left side 	<ul style="list-style-type: none"> Images 0096 and 0108 to 0115
16	The Sphinx	<ul style="list-style-type: none"> Satisfactory condition 	<ul style="list-style-type: none"> Images 0116 and 0122 to 0126
17	Boy on Dolphin	<ul style="list-style-type: none"> Satisfactory condition 	<ul style="list-style-type: none"> Images 0117 to 0121
18	Pan	<ul style="list-style-type: none"> Abrasion marks on proper left shoulder and on base Losses around base, appear old 	<ul style="list-style-type: none"> Images 0132 to 0140 on disk
19	Triton	<ul style="list-style-type: none"> Possible loss at corner of base, front right corner 	<ul style="list-style-type: none"> Images 0127 to 0131 on disk

Barry Briggs, B.A. Hon, M.A.C 122 Ferrier Ave. Toronto ON M4K 3H4 416.466.6133; bbriggs@sympatico.ca

	TITLE	CONDITON	COMMENTS
20	Sea Horse	<ul style="list-style-type: none"> Possible large loss in base, 'back' side Back of base differently coloured - May be a result of being previously covered with sand and/or mulch? Brown stains on front proper right leg (wood stain from staining of cabana) 	<ul style="list-style-type: none"> Images 0141 to 0150 on disk
21	Title Stone	<ul style="list-style-type: none"> Wood chips too deep, covering up text 	<ul style="list-style-type: none"> Image 0025

Summary

- Overall, sculptures are in satisfactory condition.
- Some sculptures are in precarious locations in relation to the functioning of the area as a nightclub. Often there will be large groups of people, drinking and perhaps not paying attention to where they are walking. The sculptures location in the renovated layout presents a potential safety/trip hazard.
 - For example, the location of **Mermaid** poses a potential trip hazard, by blocking a passage way. It is low to the ground and has a number of projecting points. Fire and safety inspections should be conducted to ensure no liability issues have been created. See images 3 and 4.
 - The location of **Narcissus** is too close to lounge furniture, is low lying, and may not be readily visible, especially at night. See image 2.
- Many of the sculptures have abrasions and shallow gouges; none appear to be serious and can be cosmetically corrected. See table and images for details.
- Cyclops** has serious damage on proper left leg, a number of scrapes/abrasions, grout around base is completely cracked and the proper left elbow is cracked and loose (with potential for loss).
- Wood chip mulch is piled up too thickly around bases and should be raked away to reveal lower edge of sculptures bases. Mulch is organic and contains moisture. Overtime it will encourage biological growth and staining of the limestone.

Recommendations

- Retain a stone conservator to provide a pricing for repair of damaged sculptures, especially **Cyclops, Sea Horse, and Hercules**.
- Relocation of **Mermaid** and **Narcissus** or modification of surrounding furniture placement to increase spacing between sculptures and walk ways around sculptures and thus reduce trip hazards.
- Remove excess wood chips from around bases.
- Fire and safety inspections should be conducted to ensure no liability issues have been created.
- Ongoing monitoring and condition assessment of sculptures.

Barry Briggs

10 July, 2014

Barry Briggs, B.A. Hon, M.A.C 122 Ferrier Ave. Toronto ON M4K 3H4 416.466.6133; bbriggs@sympatico.ca

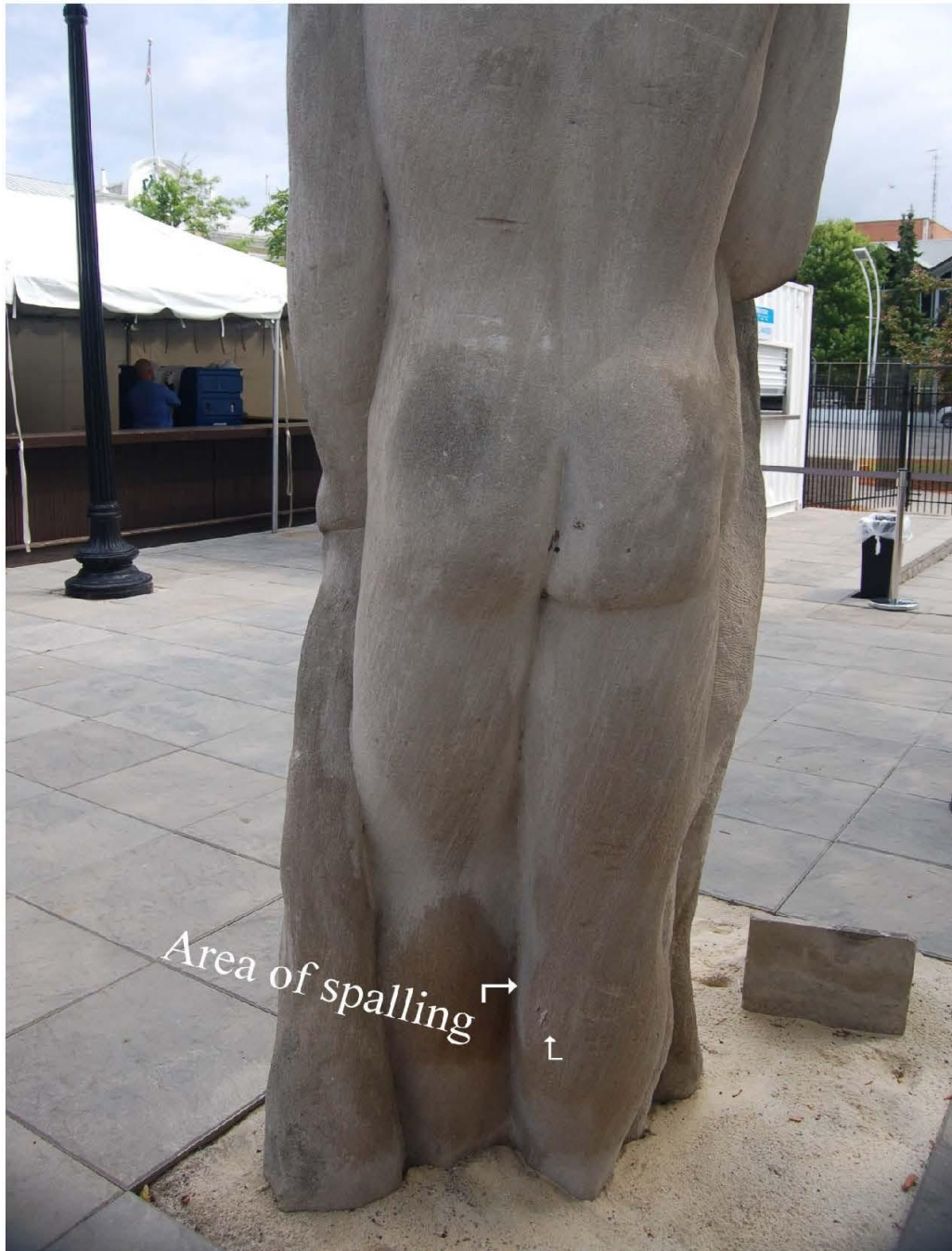


Image 1: Hercules - note black accretion on buttocks and spalling on leg

Barry Briggs, B.A. Hon, M.A.C 122 Ferrier Ave. Toronto ON M4K 3H4 416.466.6133; bbriggs@sympatico.ca

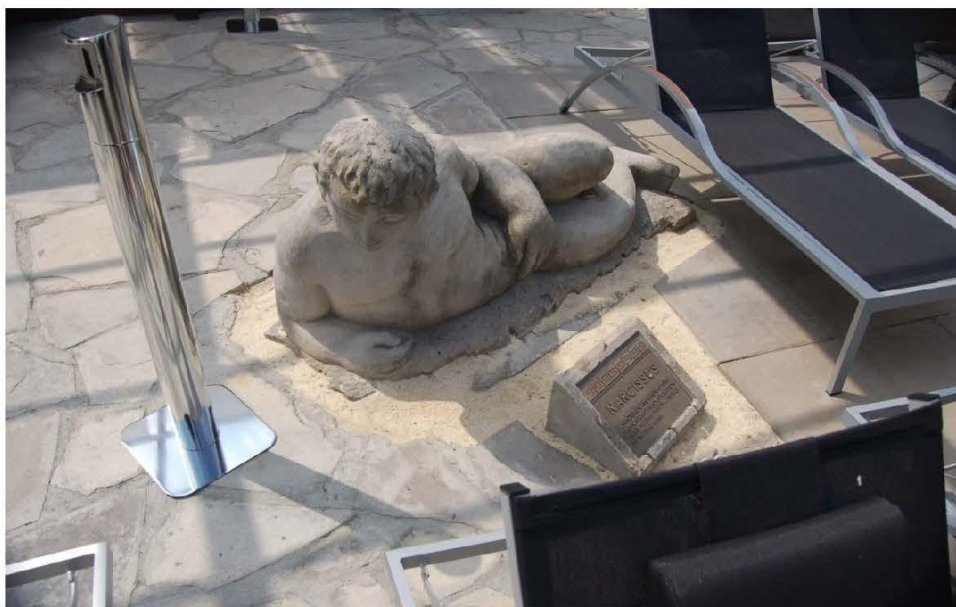


Image 2: Narcissus, too close to furniture, creating trip hazard

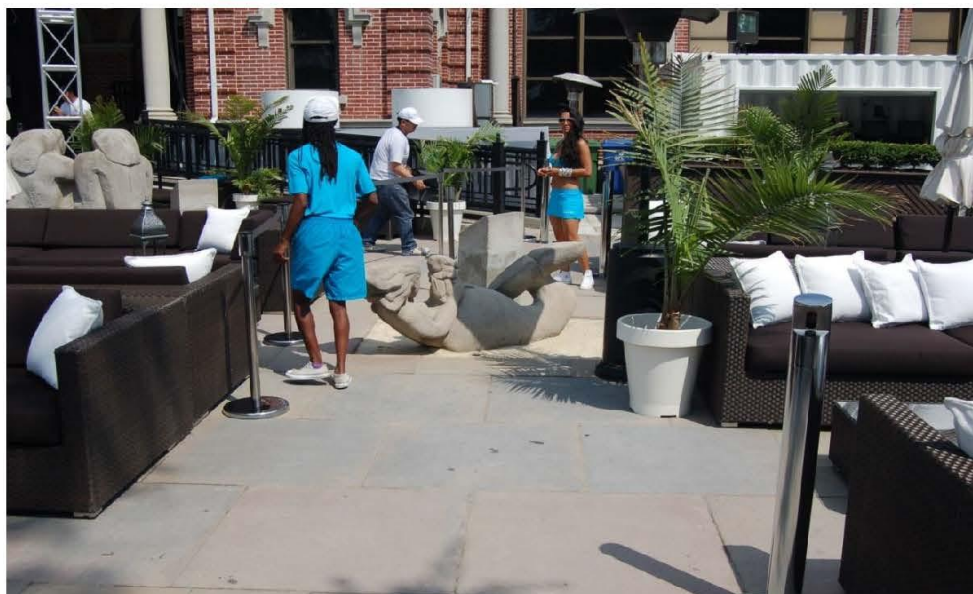


Image 3: Mermaid, very little clearance for people to pass, too close to furniture, creating trip hazard.



Image 4: Mermaid, possible trip hazard.



Image 5: Cyclops

Appendix B

Album: Cox, E.B. - Site Visit, post site renovations

Date: 09/07/2014 4:20:08 PM



DSC_0016



DSC_0017



DSC_0018



DSC_0019



DSC_0020



DSC_0021



DSC_0022



DSC_0023



DSC_0024



DSC_0025



DSC_0026



DSC_0027



DSC_0028



DSC_0029



DSC_0030



DSC_0031



DSC_0032



DSC_0033



DSC_0034



DSC_0035



DSC_0036



DSC_0037



DSC_0038



DSC_0039



DSC_0040



DSC_0041



DSC_0042



DSC_0043



DSC_0044



DSC_0045



DSC_0046



DSC_0047



DSC_0048



DSC_0049



DSC_0050



DSC_0051



DSC_0052



DSC_0053



DSC_0054



DSC_0055



DSC_0056



DSC_0057

Appendix B

Album: Cox, E.B. - Site Visit, post site renovations

Date: 09/07/2014 4:20:08 PM



DSC_0100



DSC_0101



DSC_0102



DSC_0103



DSC_0104



DSC_0105



DSC_0106



DSC_0107



DSC_0108



DSC_0109



DSC_0110



DSC_0111



DSC_0112



DSC_0113



DSC_0114



DSC_0115



DSC_0116



DSC_0117



DSC_0118



DSC_0119



DSC_0120



DSC_0121



DSC_0122



DSC_0123



DSC_0124



DSC_0125



DSC_0126



DSC_0127



DSC_0128



DSC_0129



DSC_0130



DSC_0131



DSC_0132



DSC_0133



DSC_0134



DSC_0135



DSC_0136



DSC_0137



DSC_0138



DSC_0139



DSC_0140



DSC_0141

Appendix B

Album: Cox, E.B. - Site Visit, post site renovations

Date: 09/07/2014 4:20:08 PM



DSC_0142



DSC_0143



DSC_0144



DSC_0145



DSC_0146



DSC_0147



DSC_0148



DSC_0149



DSC_0150