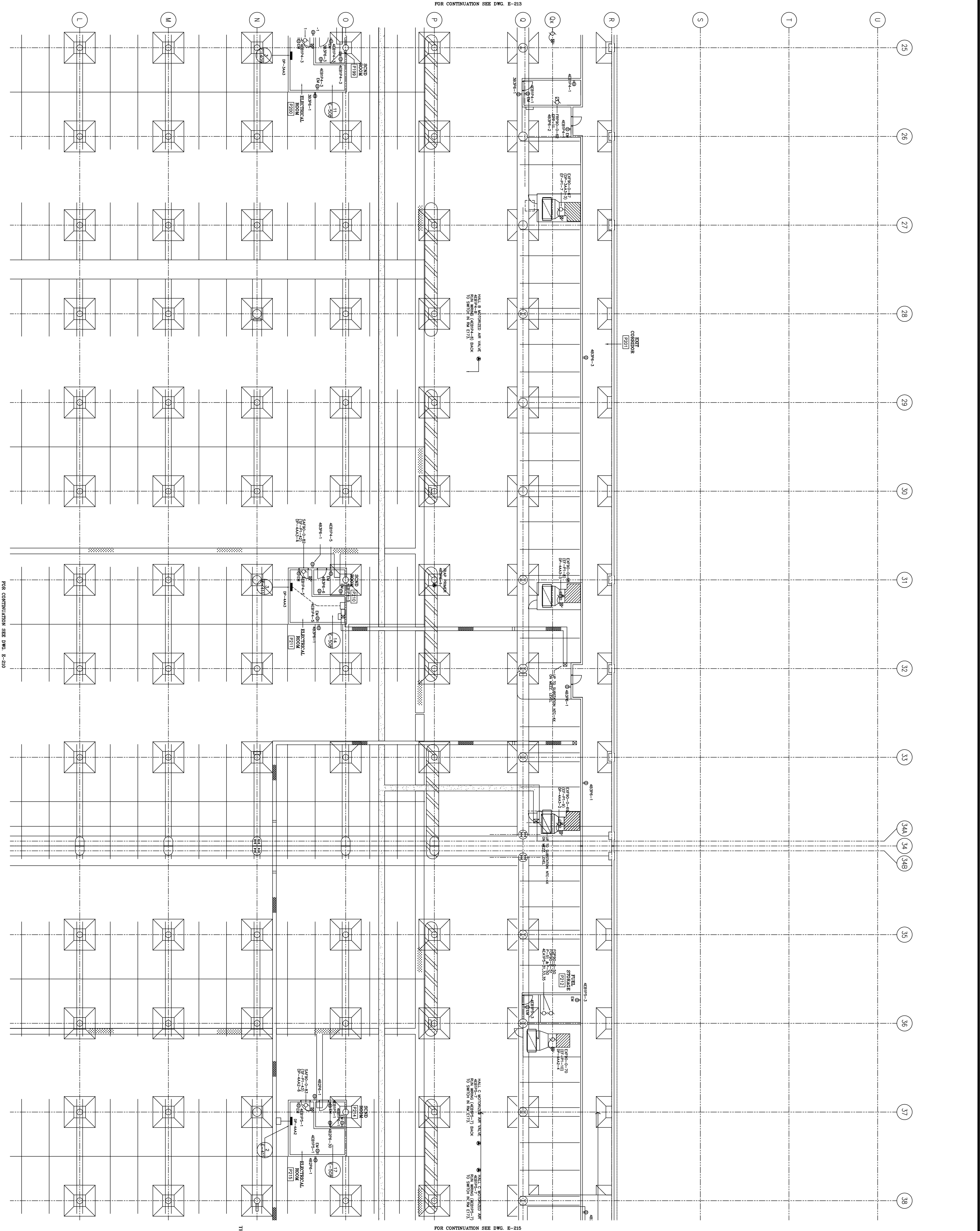


NOTES:
 1. REFER TO INCORPORATE FIELD INSTRUCTIONS, CHANGE THE CONTRACTOR.
 2. REFER TO INCORPORATE FIELD INSTRUCTIONS, CHANGE THE CONTRACTOR.

CERTIFIED AS BUILT
 Univex (Ontario) Limited
APR 28 1997
 February 28, 1997

No.	Revisions	Date	By
1	ISSUED FOR REVIEW	AUG 31/95	CVA
2	ISSUED FOR PROGRESS REVIEW	SEP 27/95	CVA
3	ISSUED FOR PROGRESS REVIEW	DEC 7/95	CVA
4	ISSUED FOR PROGRESS REVIEW	DEC 29/95	CVA
5	ISSUED FOR PROGRESS REVIEW	DEC 29/95	CVA
6	ISSUED FOR PROGRESS REVIEW	DEC 29/95	CVA
7	ISSUED FOR PROGRESS REVIEW	DEC 29/95	CVA
8	ISSUED FOR PROGRESS REVIEW	DEC 29/95	CVA
9	ISSUED FOR PROGRESS REVIEW	DEC 29/95	CVA
10	ISSUED FOR PROGRESS REVIEW	DEC 29/95	CVA
11	ISSUED FOR PROGRESS REVIEW	DEC 29/95	CVA
12	ADDITIONAL CONTRACTOR'S COMMENTS	MAY 13/97	CVA
13	ISSUED FOR PROGRESS REVIEW	FEB 26/97	CVA
14	ISSUED FOR PROGRESS REVIEW	JAN 19/98	CVA
15	ISSUED FOR PROGRESS REVIEW	JAN 29/98	CVA
16	ISSUED FOR PROGRESS REVIEW	JAN 29/98	CVA
17	ISSUED FOR PROGRESS REVIEW	JAN 29/98	CVA
18	ISSUED FOR PROGRESS REVIEW	JAN 29/98	CVA
19	ISSUED FOR PROGRESS REVIEW	JAN 29/98	CVA
20	ISSUED FOR PROGRESS REVIEW	JAN 29/98	CVA
21	ISSUED FOR PROGRESS REVIEW	JAN 29/98	CVA
22	ISSUED FOR PROGRESS REVIEW	JAN 29/98	CVA
23	ISSUED FOR PROGRESS REVIEW	JAN 29/98	CVA
24	ISSUED FOR PROGRESS REVIEW	JAN 29/98	CVA
25	ISSUED FOR PROGRESS REVIEW	JAN 29/98	CVA
26	ISSUED FOR PROGRESS REVIEW	JAN 29/98	CVA
27	ISSUED FOR PROGRESS REVIEW	JAN 29/98	CVA
28	ISSUED FOR PROGRESS REVIEW	JAN 29/98	CVA
29	ISSUED FOR PROGRESS REVIEW	JAN 29/98	CVA
30	ISSUED FOR PROGRESS REVIEW	JAN 29/98	CVA
31	ISSUED FOR PROGRESS REVIEW	JAN 29/98	CVA
32	ISSUED FOR PROGRESS REVIEW	JAN 29/98	CVA
33	ISSUED FOR PROGRESS REVIEW	JAN 29/98	CVA
34	ISSUED FOR PROGRESS REVIEW	JAN 29/98	CVA
35	ISSUED FOR PROGRESS REVIEW	JAN 29/98	CVA
36	ISSUED FOR PROGRESS REVIEW	JAN 29/98	CVA
37	ISSUED FOR PROGRESS REVIEW	JAN 29/98	CVA
38	ISSUED FOR PROGRESS REVIEW	JAN 29/98	CVA

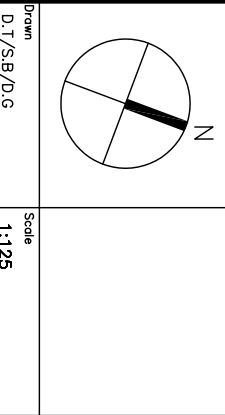


FOR CONTINUATION SEE DWG. E-213
 FOR CONTINUATION SEE DWG. E-215
 FOR CONTINUATION SEE DWG. E-214
 PROJECT No. NTC-C-201
 Drawing No. E-214

CONTRACTOR SHALL VERIFY ALL DIMENSIONS ON THE JOB. THE CONTRACTOR SHALL BE RESPONSIBLE FOR OBTAINING ALL NECESSARY PERMITS AND APPROVALS FROM THE APPROPRIATE AGENCIES.

Central Park Engineers Inc.
 Consulting Engineers
 1000 Bay Street, Suite 1000
 Toronto, Ontario M5G 1A5
 Tel: (416) 593-2222
 Fax: (416) 593-2223
 Email: info@cpengineers.com

NATIONAL TRADE CENTRE AT EXHIBITION PLACE



Project No. NTC-C-201
 Drawing No. E-214
 Title: P1 LEVEL PLAN
 Block 'G' POWER & SYSTEMS
 Date: APRIL 95
 Scale: 1:125
 Checked: C.V.B.
 Drawn: D.V.S./D.O.