

## EXHIBITION PLACE

April 12, 2003

To: The Board of Governors of Exhibition Place

From: Dianne Young  
General Manager & CEO

Subject: Educational/Outreach Program for the Wind Turbine

**Recommendation:**

**It is recommended that the Board receive this report for its information.**

**Background:**

At its meeting of May, 2001, the Board approved of entering into a long-term lease with Toronto Renewable Energy Co-operative ("TREC") to construct at Exhibition Place the first urban wind turbine.

**Discussion:**

One of the major reasons for the location of the wind turbine at Exhibition Place is to promote this turbine as a demonstration of green technologies and develop an outreach/educational plan around the turbine. The long-term lease between the Board and TREC in fact required the development of an on-site educational plan because Exhibition Place views the wind turbine as one more attraction on this site. What has become very evident since the construction of the wind turbine is the great public interest in not only learning more about wind technology but also to actually visit the site of the turbine and look at the turbine up close and in action. Therefore, TREC decided it was very important to establish as soon as possible an on-site educational program which would allow the casual visitor to learn more about wind power and other green technologies.

TREC engaged Holman Exhibits to design a community educational program to be constructed around the base of the wind turbine which is attached for the information of the Board. TREC has adopted the theme of a Gathering Place for their program and are planning a passive display providing an inviting informational space in the park. The main structure in the design is a cedar deck around the turbine which will sit over the cement base that now protrudes from the turbine. Ramps will allow ease of access to the ramp with information panels around the base of the turbine and scattered on the pathways leading to the turbine. There will also be benches around the site to add to the present park setting and all materials used will be in keeping with the environment. Phase II will expand on the plan with more walkways and entrance gates. The intent is to commence construction immediately so that Phase I can be completed by June, 2003.

THE BOARD OF GOVERNORS OF EXHIBITION PLACE



Exhibition Place, Toronto, Ontario M6K 3C3 Tel: (416) 263-3600 [www.explace.on.ca](http://www.explace.on.ca)

With the informational display in place, TREC will be able to start to work with local schools to encourage educational tours to the site.

Conclusion:

This report outlines the first phase of the community educational program planned by TREC for the wind turbine and is for the information of the Board.

Contact:

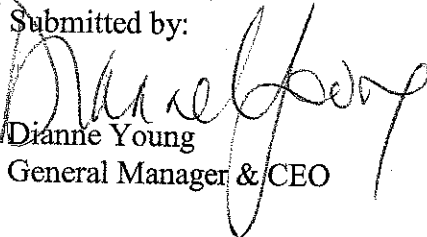
Dianne Young, GM & CEO

Telephone: 416-263-3611

Fax: 416-263-3640

E-Mail: [dyoung@explace.on.ca](mailto:dyoung@explace.on.ca)

Submitted by:



Dianne Young

General Manager & CEO

OUR OBJECTIVE IS TO CREATE

---

# A PLACE OF IMPORTANCE



HOLMAN EXHIBITS LIMITED

TO SHOWCASE RENEWABLE

---

# ENERGY ALTERNATIVES



---

TO CREATE A PLACE OF GATHERING  
FOR COMMUNITY EVENTS,  
THE ARTS AND EDUCATION



HOLMAN EXHIBITS LIMITED

# OUR PLANNING OBJECTIVE

---

- TO MAKE SAFETY CONSIDERATIONS THE PRIMARY DESIGN FOCUS
- TO BE COST EFFECTIVE
- TO PROVIDE A LONG TERM SCALEABLE SOLUTION



# THE GATHERING PLACE PHASE 1

---

THE EDUCATIONAL JOURNEY WILL BEGIN WITH THE CREATION OF THE GATHERING PLACE AT THE BASE OF THE WIND TURBINE.

THE PROPOSED DESIGN PROVIDES FOR AN INVITING INFORMATIONAL SPACE. THE MAIN STRUCTURE IS A 30 FT. DIAMETER CEDAR DECK WITH TWO ENTRANCE RAMPS.

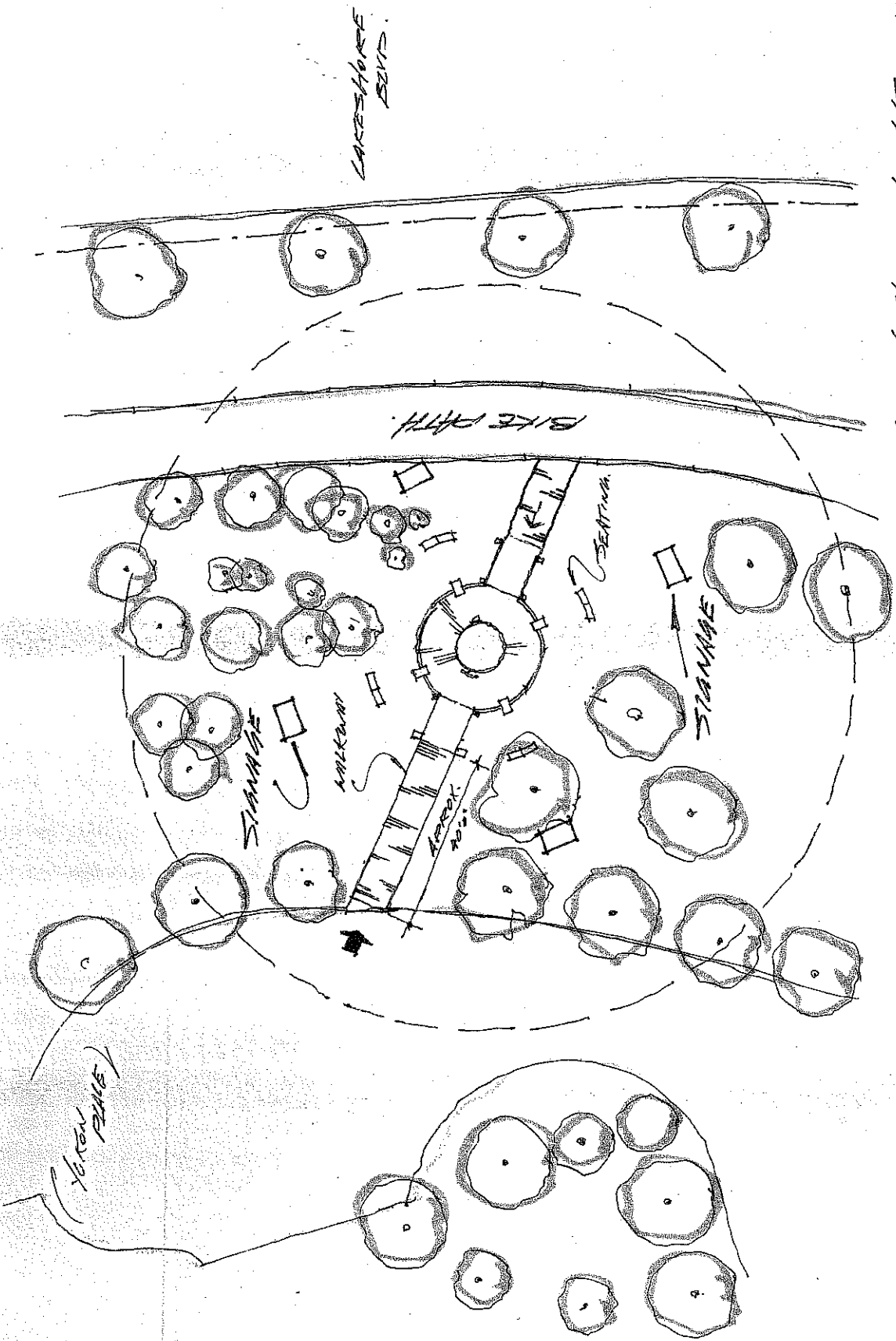
PROVISION FOR DESCRIPTION / PICTORIAL DEPICTION OF THE EDUCATIONAL JOURNEY COMES IN THE FORM OF GRAPHIC PANELS LOCATED AT THE ENTRANCES TO THE DECK, ON THE RAILING OF THE DECK AND ALSO AT THE BASE OF THE TURBINE. ALL WEATHER INFORMATION PANELS ARE ATTACHED TO STAINLESS STEEL SUPPORTS AND 10-INCH CEDAR POSTS.

SCATTERED SIGNAGE PANELS ARE ALSO FOUND ON THE GRASSED AREAS AROUND THE TURBINE.

BENCH SEATING ALLOWS THE VISITOR TO ENJOY THE SURROUNDINGS.

PATHWAYS TO THE GATHERING PLACE FOR PHASE 1 CAN BE IN THE FORM OF FINE STONE, CEMENT WALKWAY OR CEDAR DECK.

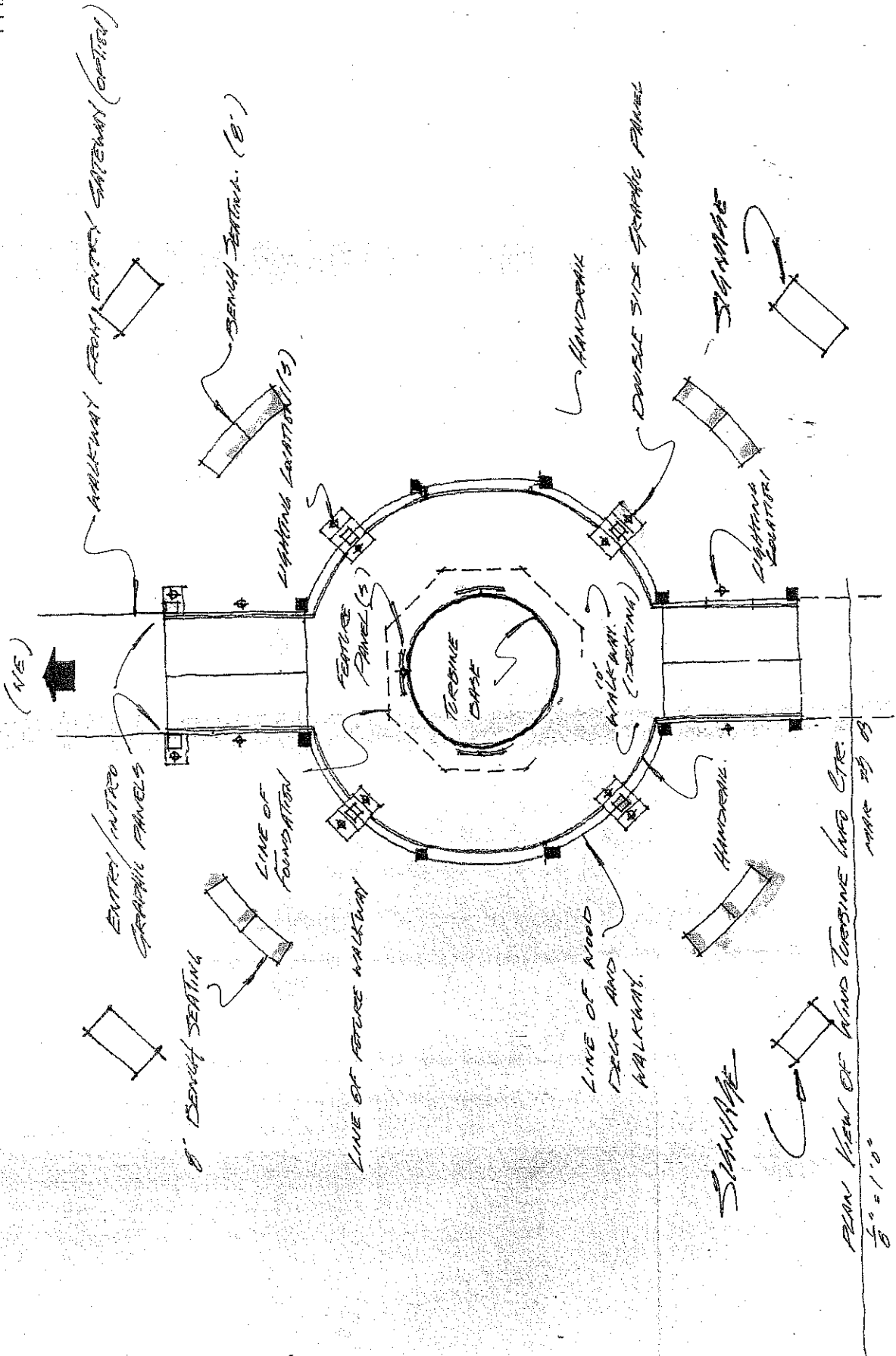


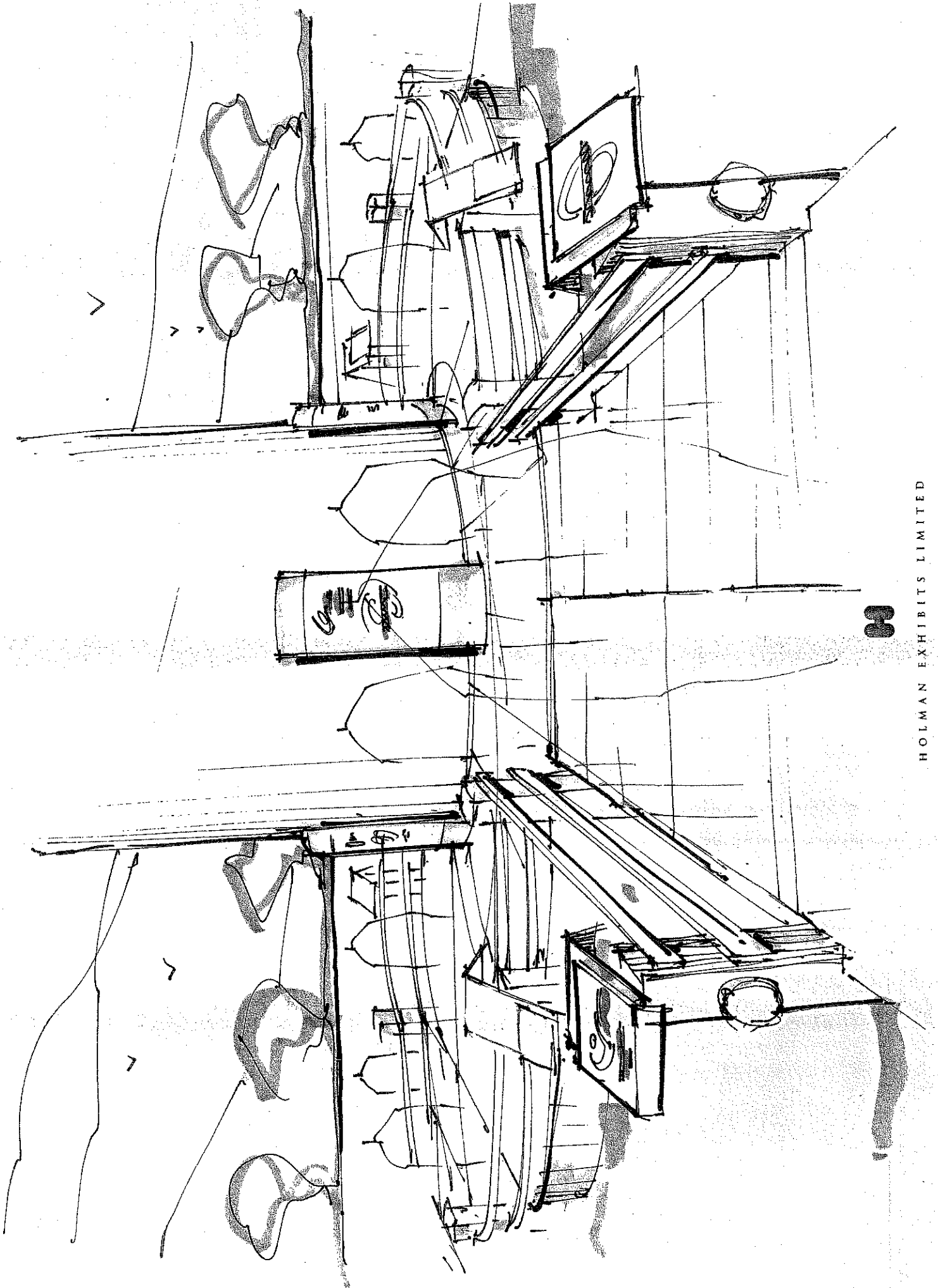


PLAN VIEW - 'PHASE ONE' - M.T. EXHIBITION CTR  
 84' x 110'  
 MAR 85 CD.

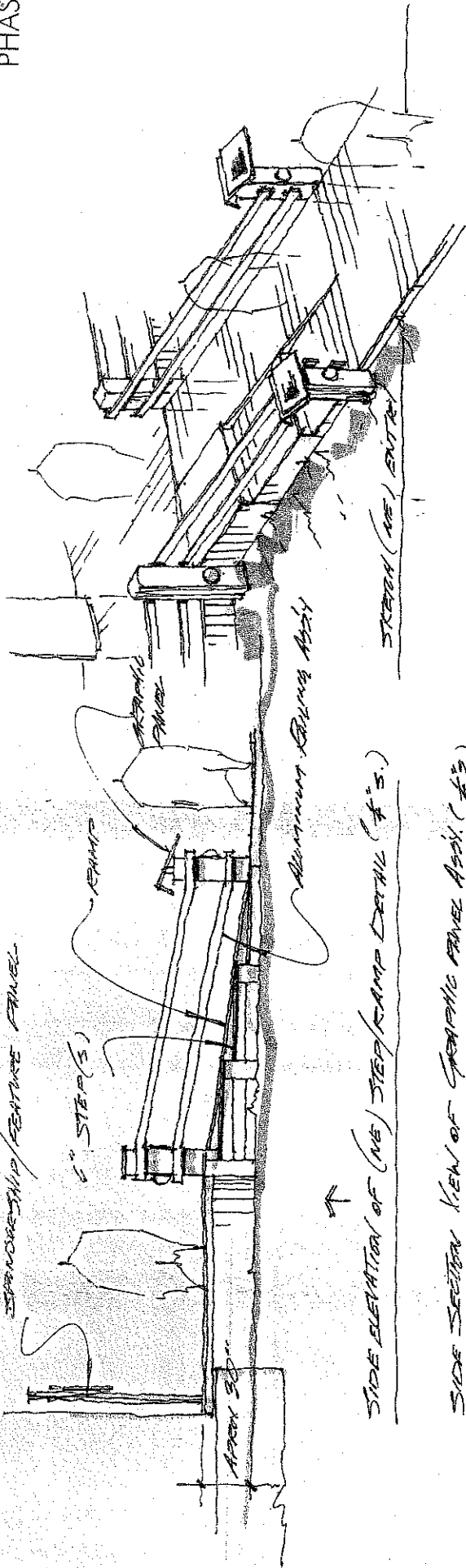






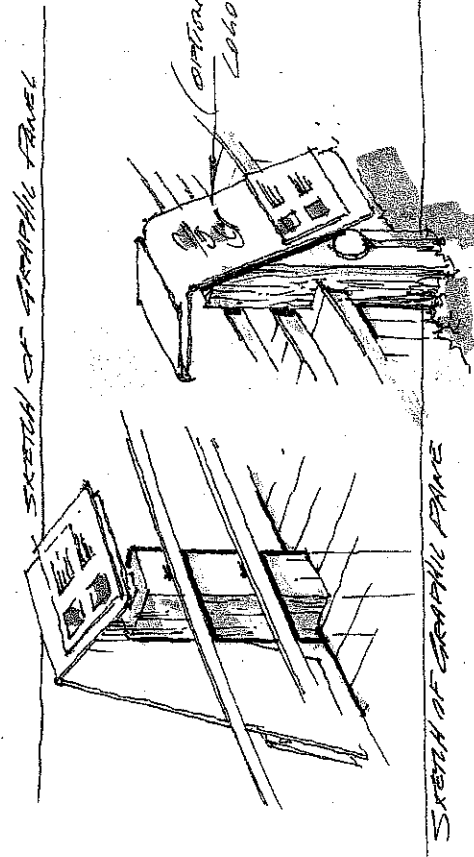
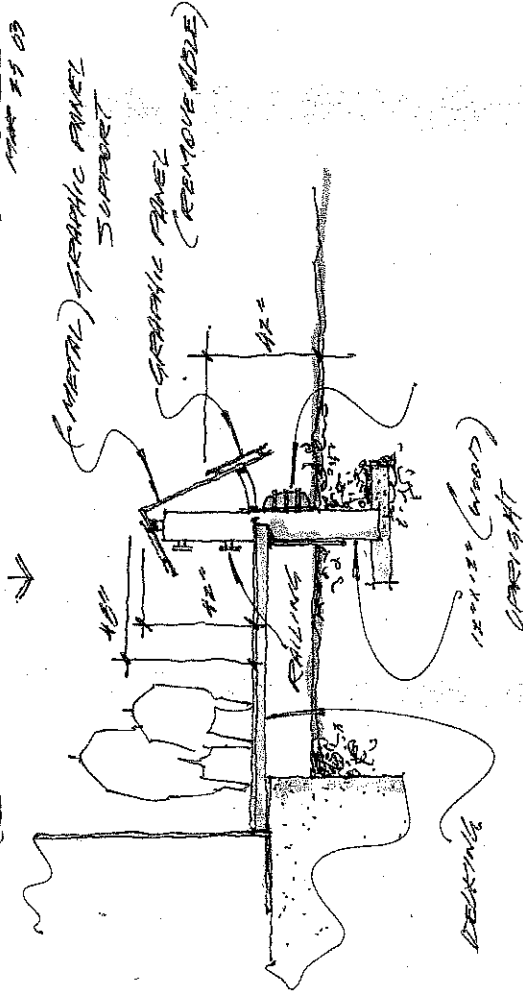


SPANDREL/FEATURE PANEL



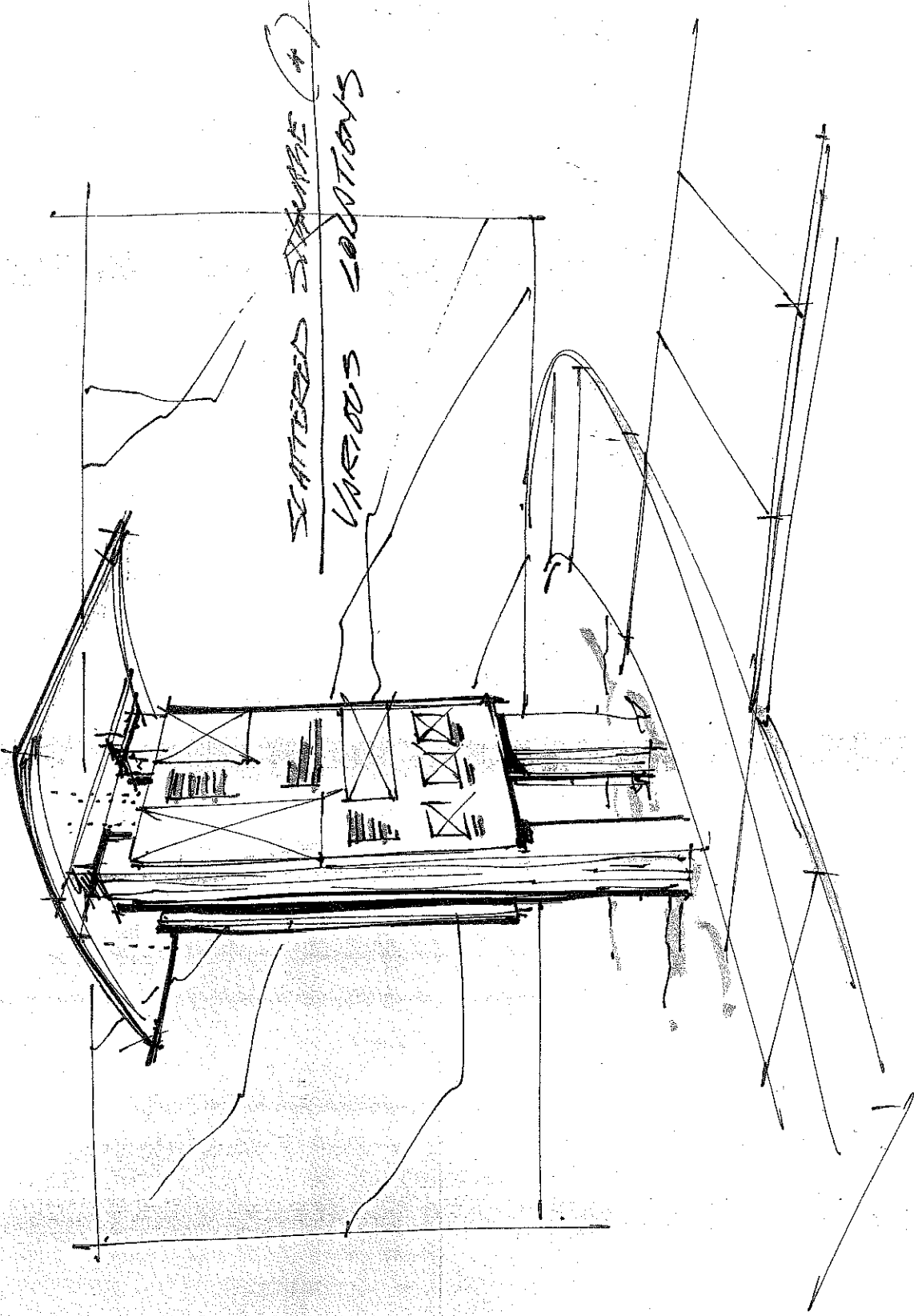
↑  
SIDE ELEVATION OF (NE) STEP/RAMP DETAIL (#'S.)

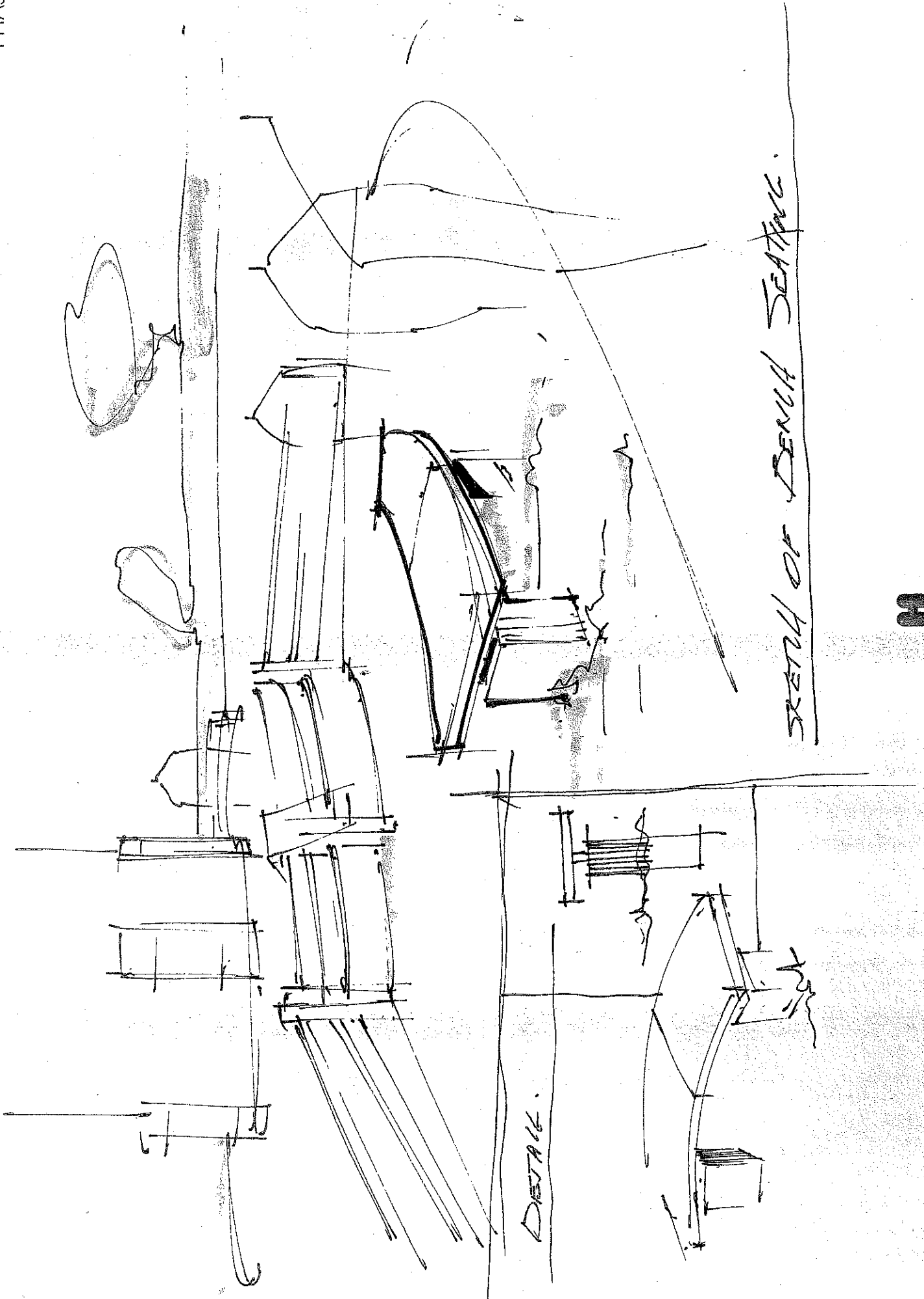
↓  
SIDE SECTION VIEW OF GRAPHIC PANEL Assy. (#'S.)



MAR 25 03







SKETCH OF BENCH SEATING.

DETAIL.



# THE GATHERING PLACE PHASE 2

---

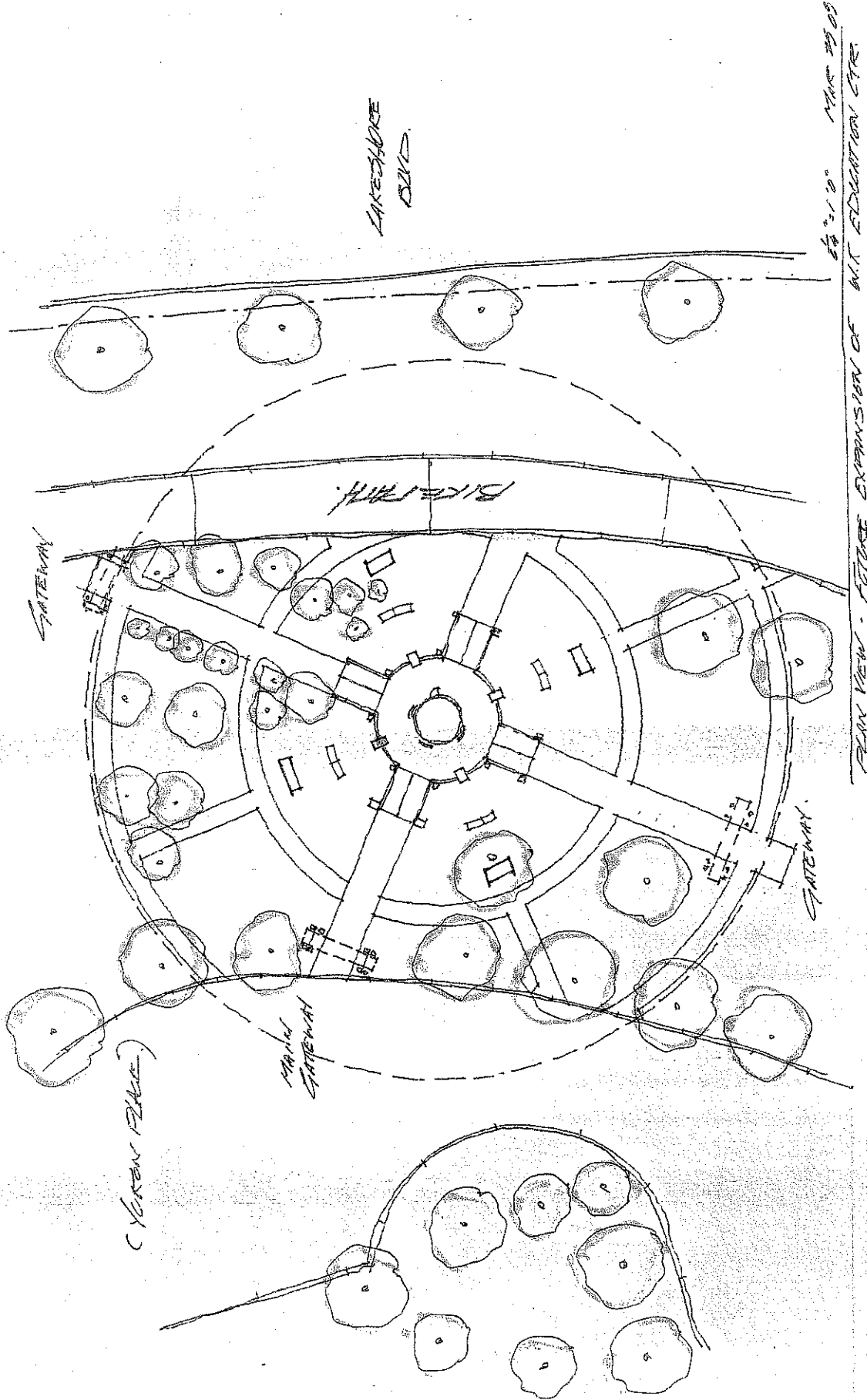
THIS PHASE ALLOWS US TO EXTEND THE EDUCATIONAL JOURNEY BY EXPANDING THE AREAS WHERE INFORMATION CAN BE DISPLAYED.

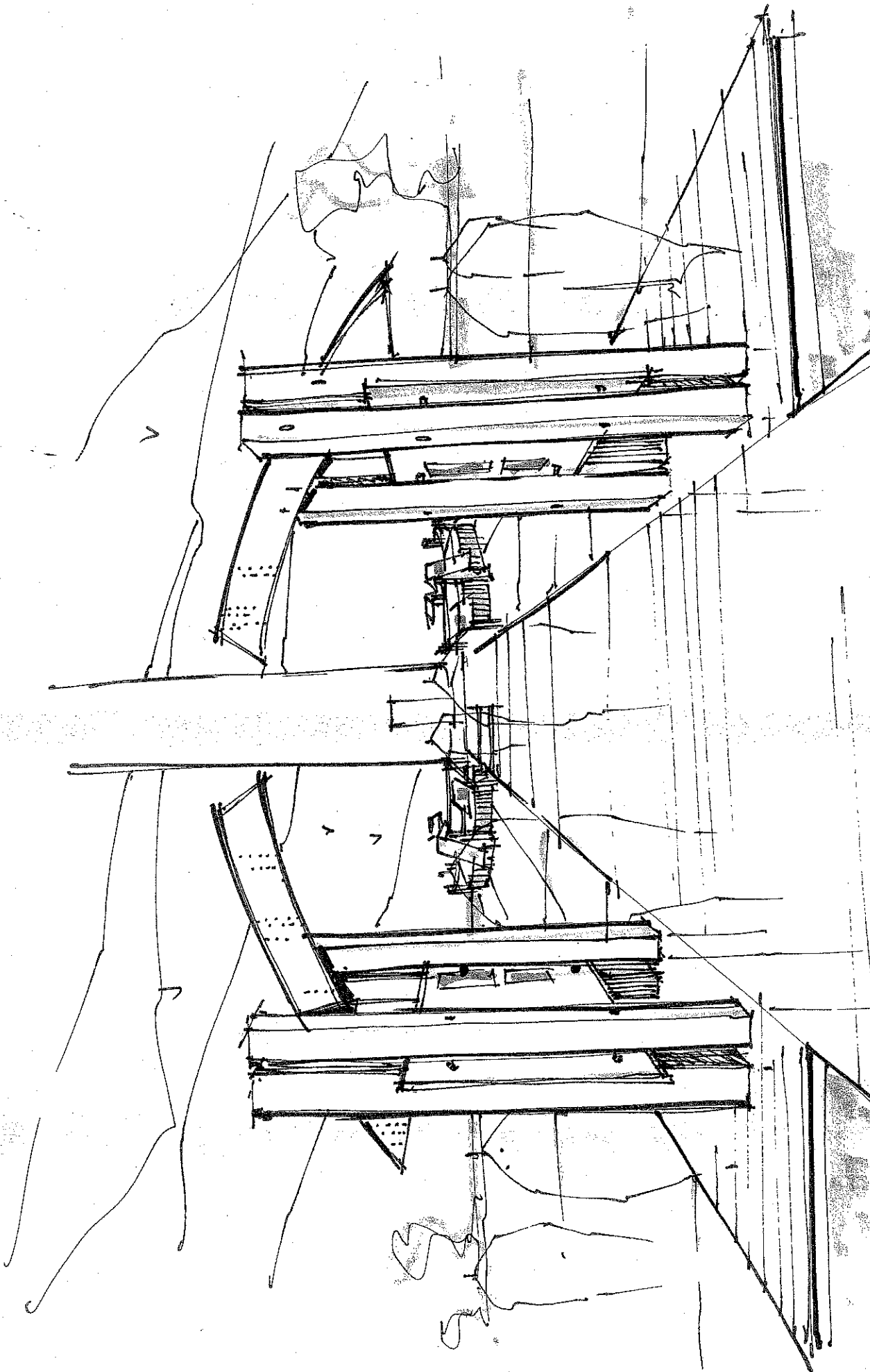
ADDITIONS OF TWO MORE RAMPS AND SIGNAGE ALLOWS THE VISITOR TO APPROACH FROM FOUR DIRECTIONS.

GATEWAYS ARE PROPOSED WHICH SERVE AS AN INVITATION FOR THE VISITOR TO ENTER THE GROUNDS OF THE GATHERING PLACE. THE CEDAR STRUCTURES AND STAINLESS STEEL CANOPIES HIGHLIGHT THE LARGE INFORMATION PANELS.

ADDITIONAL PATHWAYS AND LANDSCAPING COMPLETES THE GATHERING PLACE ENVIRONMENT.



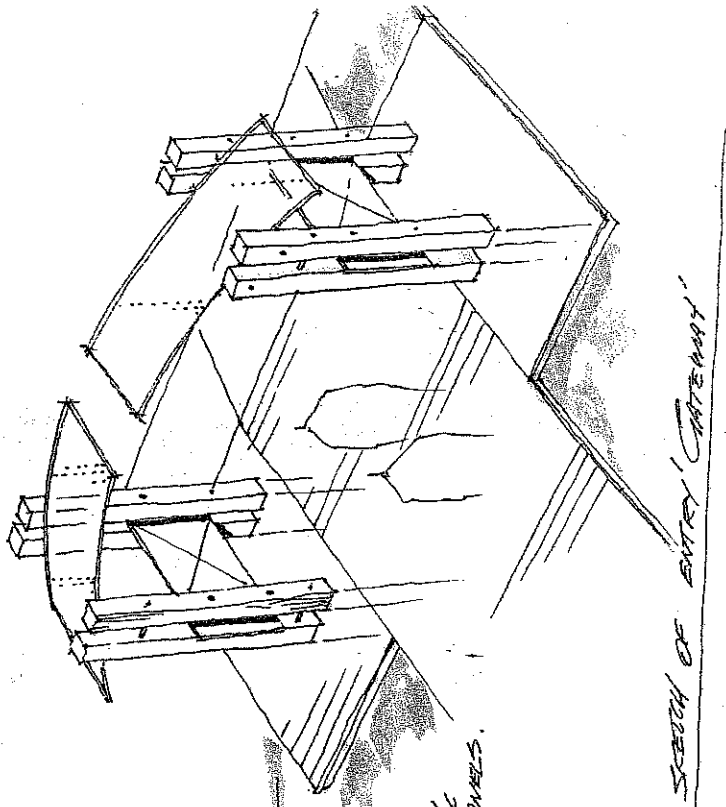
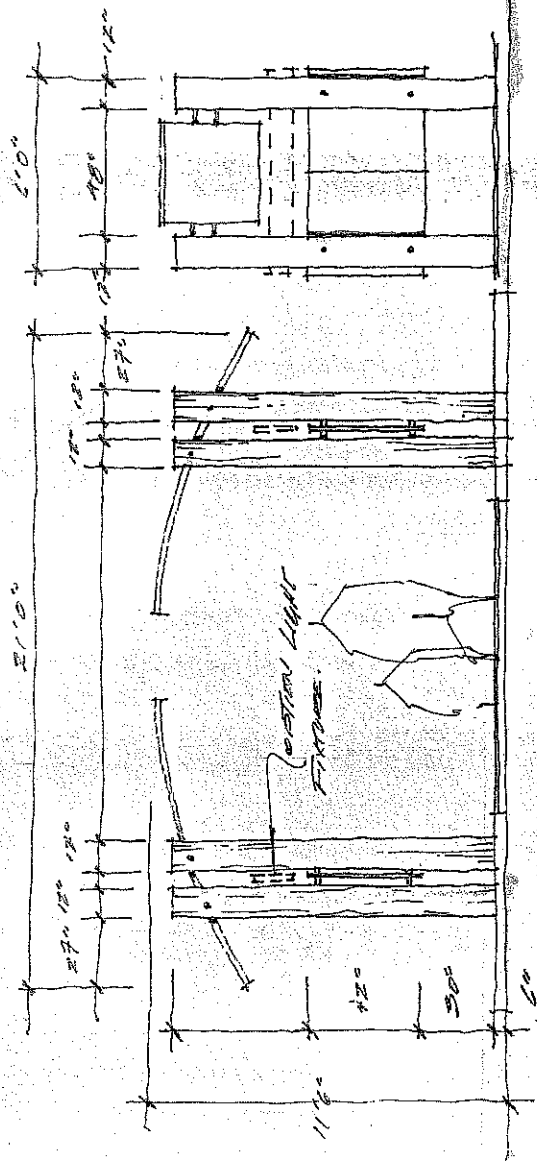




SKETCH OF 'LATERAL' / EDUCATION (A HOUSE BEYOND)





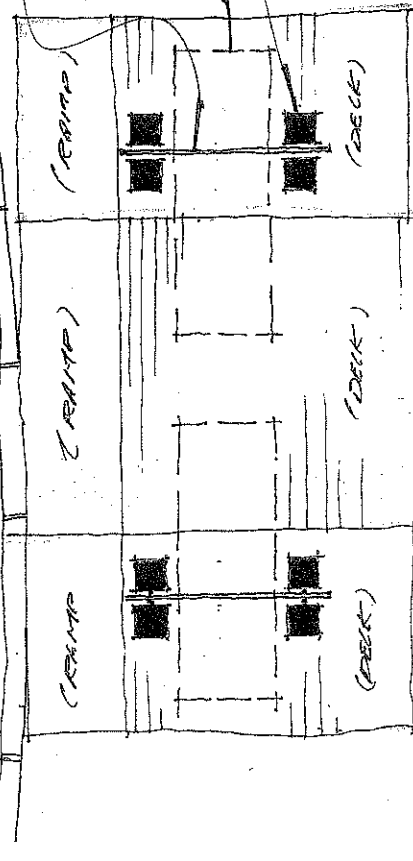


(RANDOMLY) (CORNER)

12" x 18" FRAMING PANELS

WIRE METAL CANOPY ASSY

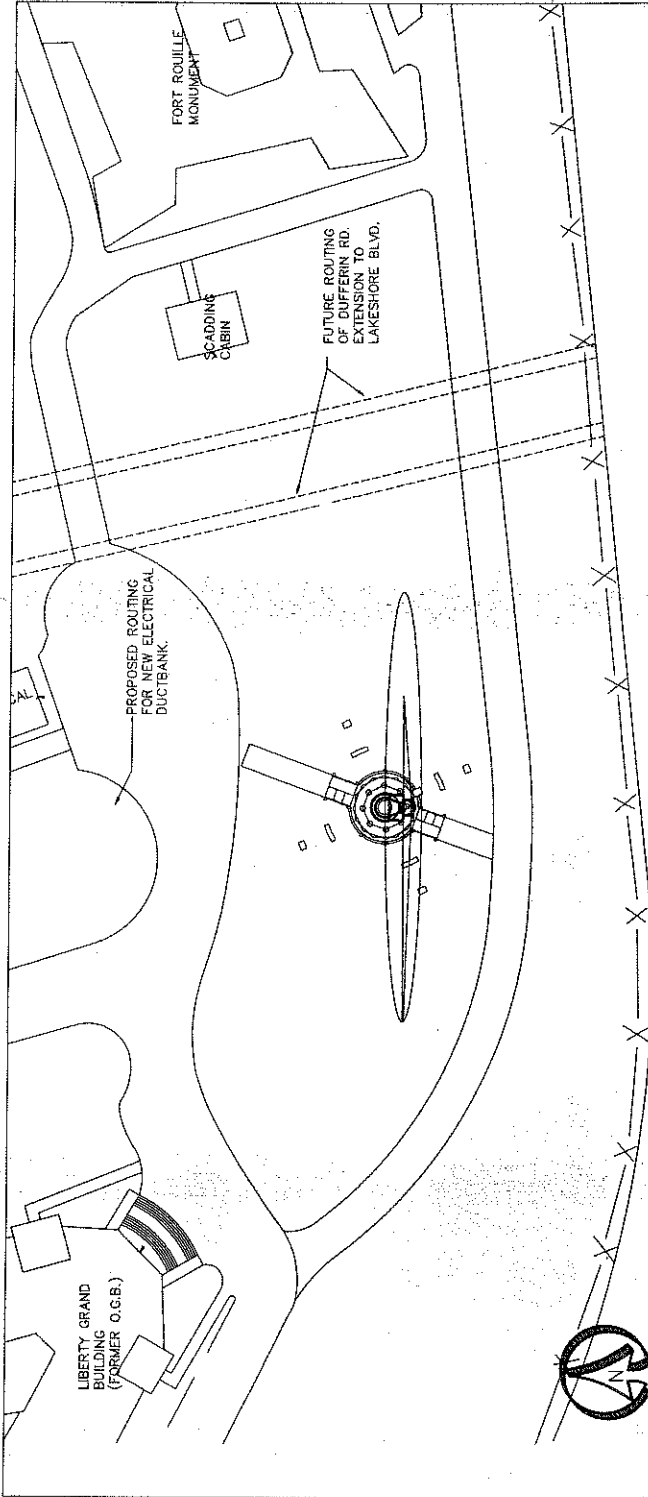
12" x 12" (FINE) POST: BEAM CARRIAGES



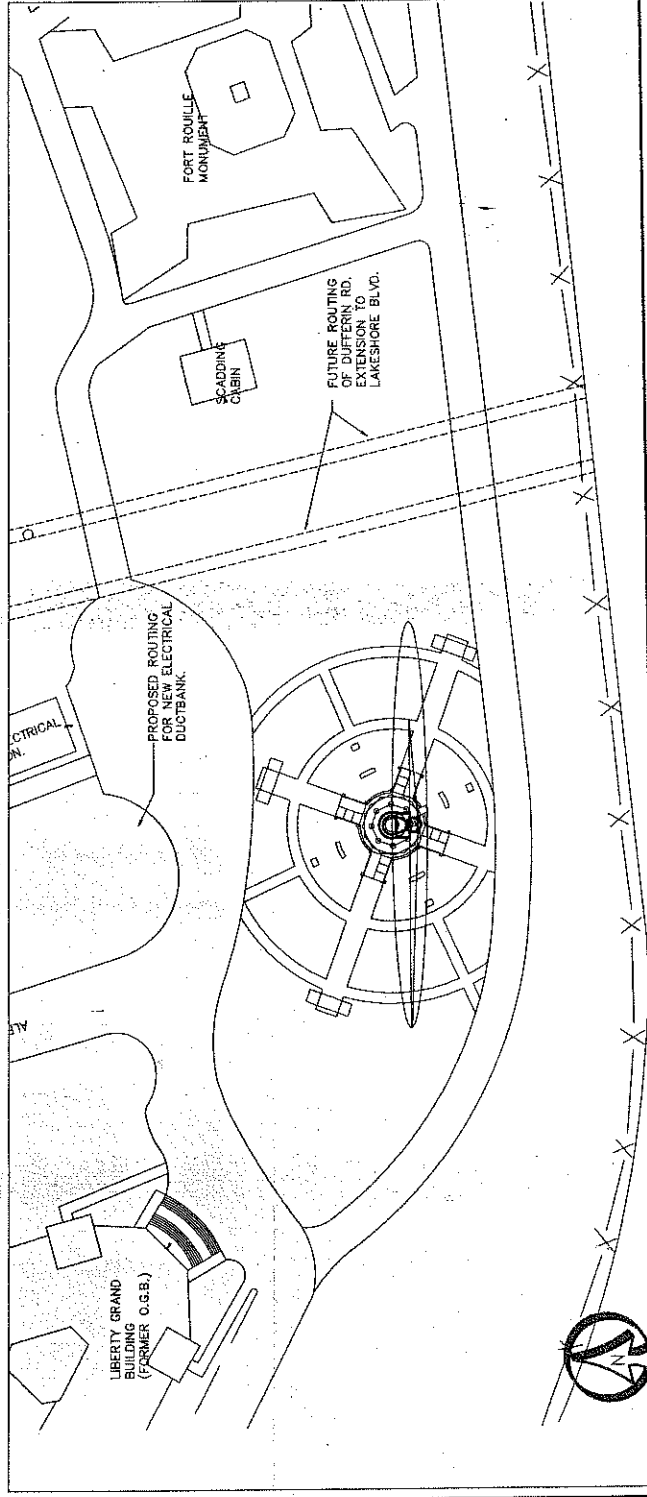
PLAN VIEW OF CANOPY MAR 24 09



# PHASE 1



# PHASE 2



NOT TO BE USED FOR CONSTRUCTION UNLESS SIGNED BY A REGISTERED PROFESSIONAL ENGINEER.

SIGNATURE: \_\_\_\_\_

DATE: \_\_\_\_\_

DO NOT SCALE DRAWING

DESIGNS CONTAINED HEREIN ARE THE PROPERTY OF HOLMAN EXHIBITS LIMITED AND SHALL BE USED WITHOUT THE WRITTEN PERMISSION OF HOLMAN EXHIBITS LIMITED.



CLIENT: \_\_\_\_\_

PHONE: \_\_\_\_\_

LOCATION: \_\_\_\_\_

PROJECT: \_\_\_\_\_

DRAWING: \_\_\_\_\_

FILE: \_\_\_\_\_

DATE: \_\_\_\_\_

DRAWN BY: \_\_\_\_\_

SCALE: \_\_\_\_\_