

8

May 21, 2002

EXHIBITION PLACE

To: The Board of Governors of Exhibition Place

From: Dianne Young
General Manager & CEO

Subject: Filming at Exhibition Place

Recommendation(s):

It is recommended that the Board receive this report for its information.

Background:

In the Spring, 2001, at the request of the Chair of the Board, representatives from FLIC and Exhibition Place staff were brought together to explore ways to better promote Exhibition Place to the filming industry. At its meeting of November 2001, the Board received a report which summarized the progress to-date of the "Exhibition Place Film Group".

Discussion:

Since the last report to the Board, the Exhibition Place Film Group continued to meet to review and refine the Exhibition Place Policy and Information package, and the final document was presented to the FLIC Committee at its meeting of January 31, 2002. Following several months' review by FLIC, staff was advised that the Exhibition Place Film Policy and Information was accepted and endorsed by FLIC.

For the Board's information, the Exhibition Place Film Policy follows the format of similar documents in use by the GTAA, Copps Coliseum, Casa Loma and the Bruce County Conservation Authority. It addresses topics such as general policies and guidelines for filming at Exhibition Place and the NTC, rental rates, IATSE and other union jurisdictions and labour rates, catering and craft services, as well as specific policies and guidelines that apply only to the NTC or to specific sites and venues on the grounds outside the NTC. This document also includes photos, site plans and floor plans and sample license agreements for both Exhibition Place and the NTC.

Some of the major issues addressed by the Joint Film Working Group and outlined in the policy are as follows:

- (a) A comprehensive policy document to address the industry perception that there were no standard terms and conditions applied consistently to all film productions at Exhibition Place and the designation of a film liaison person for Exhibition Place and the NTC.

- (b) Rental Rates: Sets rates for all buildings, parking areas and grounds, and a reduction in rent for "dark days" and productions in excess of 14 days. It also has a flexible payment schedule as proposed by the industry representatives; provides for reduced rental for partial use of buildings; and allows for further negotiations and reductions for productions that extend beyond 14 days.
- (c) Catering rights and craft services: The Board is bound by an agreement with its caterer Servo Canada which has the exclusive right to provide all food and beverage services within all buildings at Exhibition Place, including the NTC. Through discussions with film industry representatives, Servo Canada has produced sample menus that would meet the food and beverage obligations of a film producer at competitive pricing and has also reached some agreement on the provision of Second Meals. In addition, Servo Canada has agreed to allow other third parties to provide some "Craft Services" for beverages and light snacks.
- (d) IATSE Local 58 Jurisdiction - The Board has had a collective agreement with IATSE Local 58 since 1936 and since 1978, IATSE Local 58 claimed jurisdiction over filming throughout Exhibition Place. In November 2001, Exhibition Place ratified a new agreement which changed significantly the jurisdiction of IATSE Local 58 in the filming area and now allows third parties to film at Exhibition Place if they are a signatory to a separate collective agreement with a studio mechanics or studio technicians union of one of the locals of IATSE. This arrangement does not preclude a producer from utilizing IATSE Local 58 but also allows a producer to use IATSE Local 873 instead. Exhibition Place will not be involved in establishing the terms of agreements between producers and IATSE locals, nor in the provision of labour called to the production or payment of that labour. All this will be in the control of the film producer.

While this new agreement was originally viewed by FLIC as disadvantageous to non-union and NABET productions, three such productions have occurred since the ratification of the new collective agreement with IATSE – two commercials which traditionally use non-union labour, as well as a long-format movie - all of which negotiated site-specific collective agreements with the film local of IATSE, Local 873, in order to film at Exhibition Place.

The Film Policy and Information will now be distributed both locally and also to the municipal and provincial offices who are responsible for marketing Toronto to the film industry. Exhibition Place and NTC staff have already received positive comments on the adoption of the new Film Policy from the film industry and industry trade magazines.

Conclusion:

This report provides an update on the filming at Exhibition Place and the NTC. Attached for the information of the Board is the Executive Summary of the Film Policy and Information document. A full copy of the Policy can be found on the website at www.explace.on.ca.

Finally, at the end of 2002, Exhibition Place staff plan to hold a follow-up meeting with the Film Working Group to assess how the Film Policy has been working and any issues that need to be addressed.

Contact:

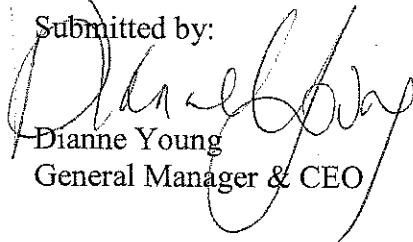
Kathryn Reed-Garrett, Director of Business Development

Tel: 416-263-3606

Fax: 416-263-3690

Email: kreed-garrett@explace.on.ca

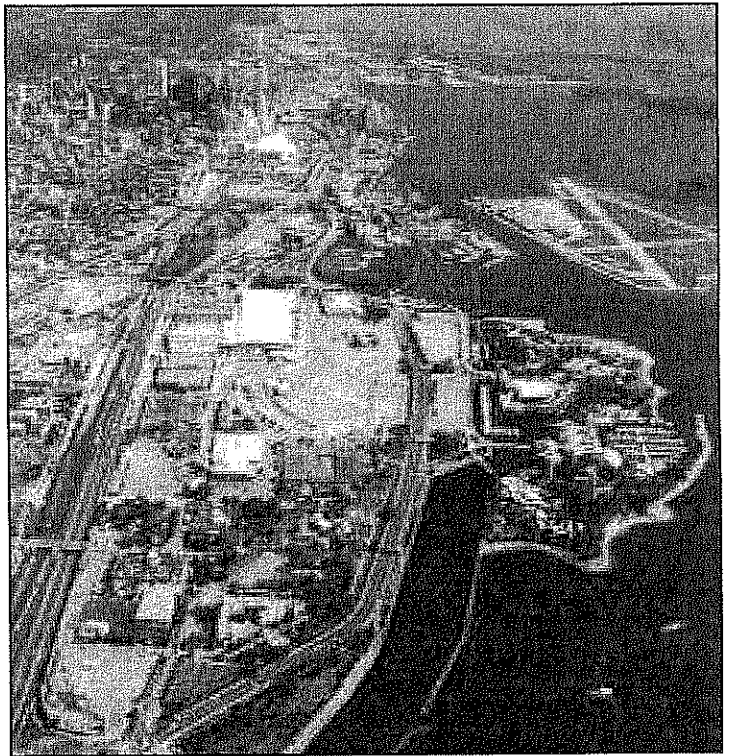
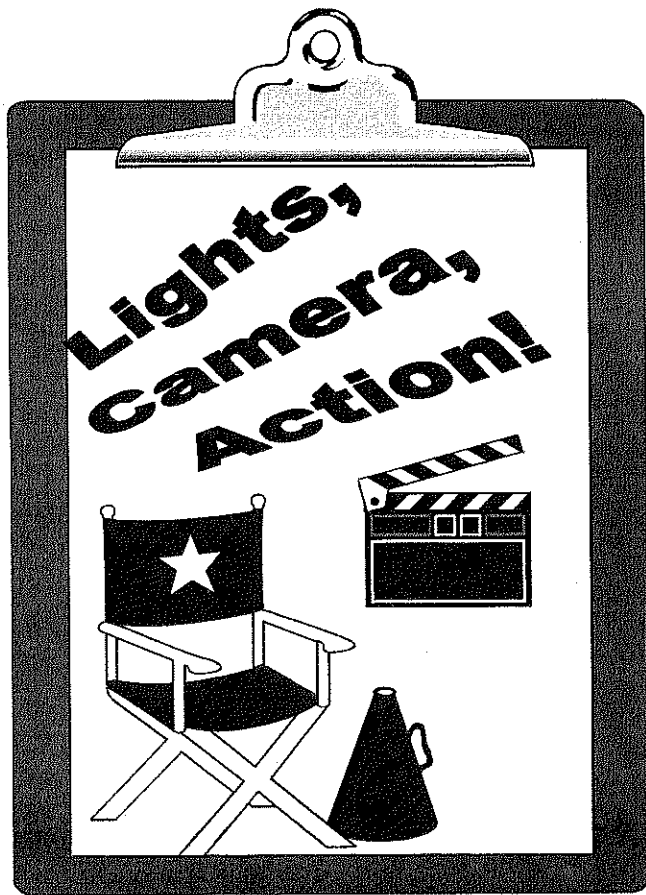
Submitted by:

A handwritten signature in black ink, appearing to read 'Dianne Young', is written over the printed name and title.

Dianne Young

General Manager & CEO

Y:\2002Reports\Film Policy.doc



**Film Policy,
Rental Rates,
and (sample)
License Agreements
For :**

- **Exhibition Place**
- **The National Trade Centre**



EXHIBITION PLACE



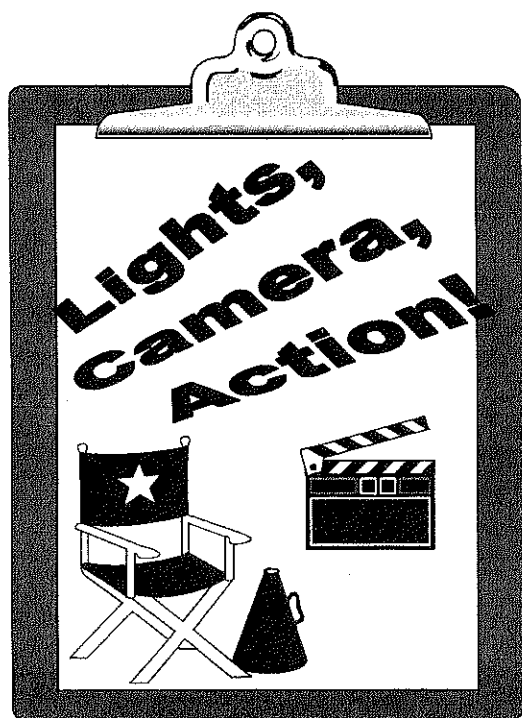
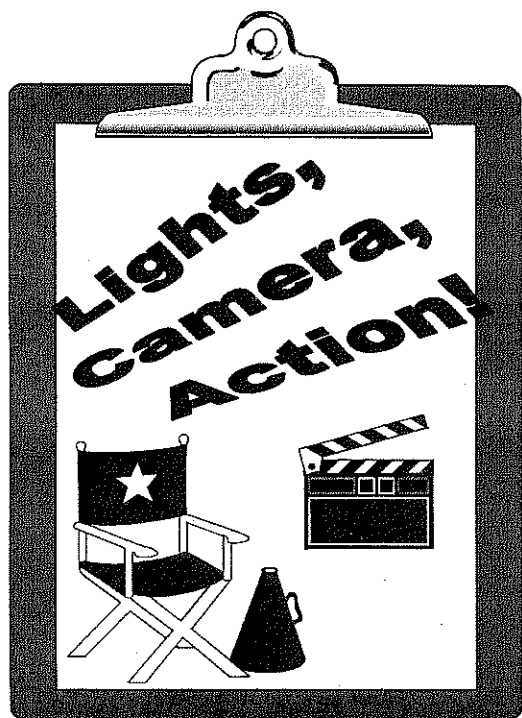


TABLE OF CONTENTS

1) Introduction	Page 1
2) General Policies and Guidelines	Page 2-3
3) Rental Rates	Page 4
4) I.A.T.S.E. & Other Labour Rates	Page 5-6
5) Catering and Craft Services	Page 7- 9
6) Exhibition Place	Page 10-12
6.1) Special Policies & Guidelines	Page 13-14
6.2) Filming at Tenant Premises	Page 15
6.3) Site Plan	Page 16
6.4) Inventory	Page 17
6.5) License Agreement (sample)	Page 18-28
7) The National Trade Centre Complex	Page 29-32
7.1) Special Policies & Guidelines	Page 33-35
7.2) Floor Plans	Page 36
7.3) License Agreement (sample)	Page 37-45



Exhibition Place and The National Trade Centre welcome the Film Industry and encourage the use of our facilities for the filming of feature films, television series, movies of the week, commercials, and still photography.

For your convenience, we have prepared a comprehensive package of information, which contains answers to many questions that you may have with respect to filming at Exhibition Place and The National Trade Centre.

Please feel free to call either of the following Film Liaison Representatives to reserve a location or if you have questions or require any additional information:

EXHIBITION PLACE:

Kathryn Reed-Garrett, (416) 263-3606

THE NATIONAL TRADE CENTRE:

Barbara Outschoorn, (416) 263-3023.

1.) INTRODUCTION

Exhibition Place and The National Trade Centre welcome the Film Industry and encourage the use of our facilities for the filming of feature films, television series, movies of the week, commercials, and still photography.

During the past several years, our facilities have been selected as a preferred location for many feature films such as "Three To Tango", "Detroit Rocks City", "Driven", "Bait", "D2K", "New Jersey Turnpikes", "A Cool Dry Place", "Between Strangers", and "Ararat", to name only a few, as well as a location for commercials for clients that include Budweiser, Scope, Rogers A T & T, Credit Suisse and Cantel.

For your convenience, we have prepared a comprehensive package of information, which contains answers to many questions that you may have with respect to filming at Exhibition Place and The National Trade Centre.

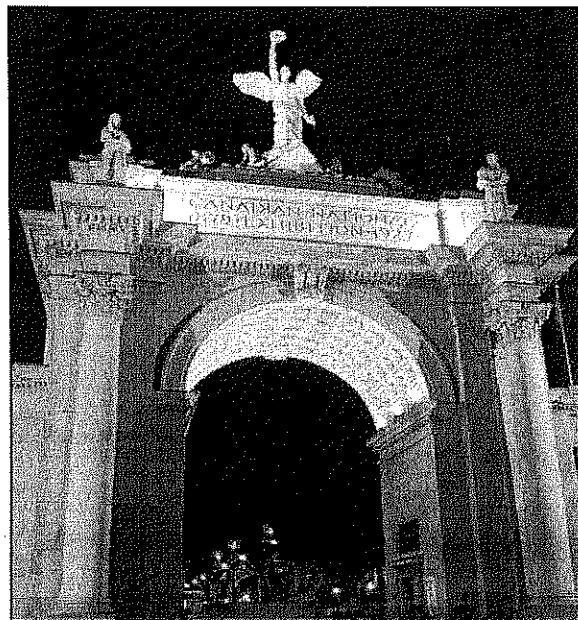
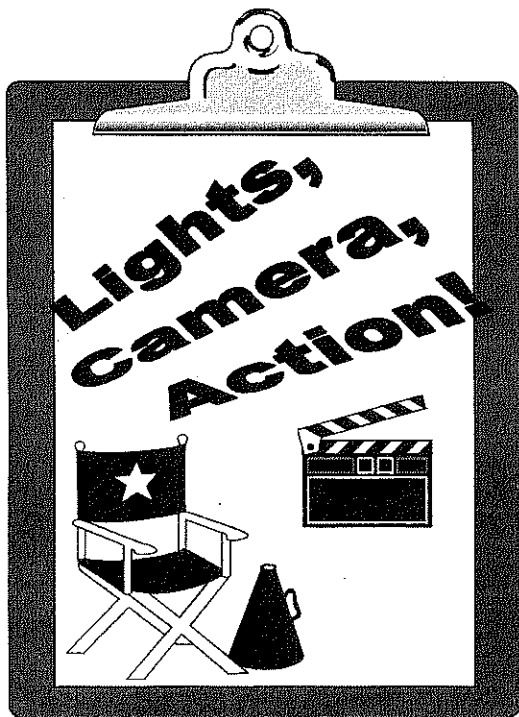
Two key contacts have been designated to answer any and all questions that you may have with respect to filming at Exhibition Place and The National Trade Centre. Each key contact, or **Film Liaison Representative**, is responsible for a designated area of the site and can assist you in determining availability, cost and special conditions for your production. These **Film Liaison Representatives** are:

EXHIBITION PLACE: Kathryn Reed-Garrett, (416) 263-3606; (416) 263-3690 (fax); or kreed-garrett@explace.on.ca (for filming at the grounds and in all buildings except as noted below). Or, visit the web site at www.explace.on.ca.

THE NATIONAL TRADE CENTRE: Barbara Outschoorn, (416) 263-3023; (416) 263-3029 (fax); or boutschoorn@ntc.on.ca (for filming in The National Trade Centre, the Automotive Building, Heritage Court, the Coliseum Arena, and the Galleria). Or, visit the web site at www.ntc.on.ca.

The (City of) Toronto Film & Television Office can be reached at (416) 392-7570; (416) 392-0675 (fax) or at info@torontofilmpermits.com.





2.) GENERAL POLICIES & GUIDELINES

AVAILABILITY

Exhibition Place and The National Trade Centre welcome the Film Industry and encourage the use of our facilities for the filming of feature films, television series, movies of the week, commercials, and still photography. It is important to note, however, that Exhibition Place and The National Trade Centre will remain open for business during any location shoot and that location and production managers and their crew(s) must work to accommodate the requirements of the 100+ clients of Exhibition Place and The National Trade Centre. Every effort must be made to minimize disruption to the permanent tenants of Exhibition Place and The National Trade Centre and to the neighbouring residents. Certain facilities and/or the entire site may not be available or open at certain times of the year or during scheduled events and shows. Please ask your Film Liaison Representative for details and for a copy of the most recent Schedule of Events, or visit us on-line at www.explace.on.ca or www.ntc.on.ca.

CRAFT SERVICE

Craft services are permitted at Exhibition Place and The National Trade Centre, however, they are to be limited to beverages and light snacks, and all such service that is provided by an operator who is not Exhibition Place and/or its authorized agent(s) must be approved in advance.

If such approval is not obtained, the production company will be held accountable for penalty fees. Please see Section 5 for additional information.

EVENT STAFF

As soon as your license agreement is executed, an Event Coordinator will be assigned to your production. All requests and communications must be directed to your Event Coordinator. Under no circumstances shall any representatives communicate directly with staff or with union staff, or with the clients and tenants of Exhibition Place and The National Trade Centre.

FOOD & BEVERAGE SERVICE

Exhibition Place and its authorized agent(s) retain the exclusive right to provide any catering and all food and beverage of any kind and to retain all revenue derived from the sale of these. Exhibition Place and its authorized agent(s) retain first right of refusal for any Second Meal that may be required. Please see Section 5 for additional information and sample menus.

GENERAL POLICIES & GUIDELINES

HERITAGE DESIGNATION

Many of the unique buildings and structures located at Exhibition Place are protected by municipal or provincial heritage acts – please ask your Film Liaison Representative for details.

INSURANCE & INDEMNITY

All production companies operating at Exhibition Place and The National Trade Centre will be required to post general liability insurance in an amount no less than \$5 million dollars or an amount as dictated by the City of Toronto. Your Film Liaison Representative can provide you with further details, and additional requirements can be found in the sample License Agreements contained in this package.

LICENSE AGREEMENT

All production companies will be required to execute a standard License Agreement – samples of these License Agreements can be found in Sections 6.3 and 7.3 of this package.

PARKING SERVICES and FACILITIES

Exhibition Place retains exclusive rights to all parking services on the grounds and operates a total of 7,730 parking stalls located in several parking lots throughout the grounds, including the underground garage of The National Trade Centre. Parking Rates are included in Section 3 “Rental Rates”, and arrangements for parking vehicles during shoots that do not occur at Exhibition Place can be made, provided that no conflicts exist with other scheduled events and use of the parking facilities by the tenants of Exhibition Place. For further information, please speak with your Film Liaison Representative, or call Parking Services direct at (416) 263-3646.

PERMIT REQUIREMENTS

All production companies operating at Exhibition Place and The National Trade Centre will be required to produce and display all permits and licenses as are required by the City of Toronto Film Liaison Office, and all production companies operating at Exhibition Place and The National Trade Centre will be bound by the terms and conditions of these permits and licenses.

RENTAL PAYMENTS AND DEPOSITS

Facility rental fees vary from venue to venue – please see Section 3 for complete information. Deposits equal to 100% of full facility rental fees are required in advance and are non-refundable. Terms of payment (which can be found in the sample License Agreements for Exhibition Place and The National Trade Centre (Sections 6 & 7 of this package respectively)) are: 25% due and payable upon execution of a License Agreement, 25% due and payable on the first day of possession (i.e.: Prep), and the balance (50%) due and payable on/before the first day of filming. Damage deposits for certain facilities may be required. Deposits for all material rentals and services (labour) will be required in advance. Discounts for prep and wrap days are indicated in Section 3. Special rates for shoots with duration of more than 14 days may be available – please ask your Film Liaison Representative for details.

SMOKING

All buildings located at Exhibition Place, including The National Trade Centre, are smoke-free. Some buildings may have dedicated smoking facilities. Please ask your Film Liaison Representative for details.

UNION LABOUR AND I.A.T.S.E. INVOLVEMENT

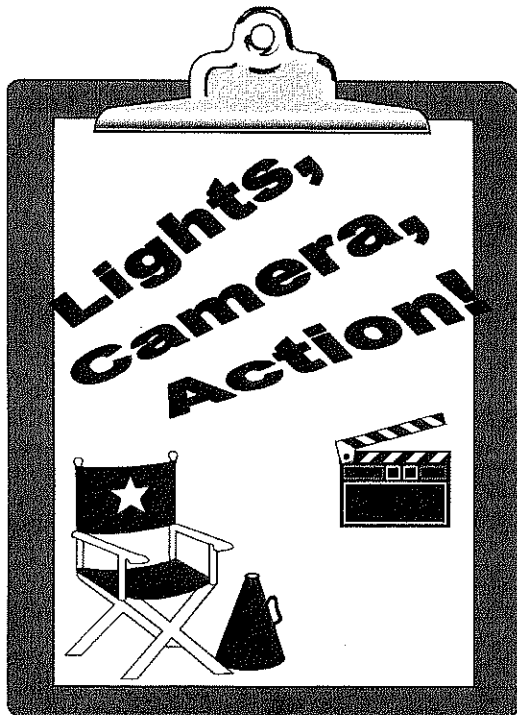
Exhibition Place and The National Trade Centre have a collective agreement with I.A.T.S.E. Local 58 – see Section 4 of this package for information about the jurisdiction of I.A.T.S.E. Local 58. Exhibition Place and The National Trade Centre also have collective agreements with the following whose jurisdictions include all of the grounds, buildings, facilities and tenanted premises of Exhibition Place:

- Parking - CUPE Local 2840,
- Carpentry - CAW Local 27,
- Electrical - IBEW Local 353,
- Labourers' International Union of North America Local 506,
- Painters and Allied Trades District Council 46,
- Plumbers and Pipefitters Local 46



EXHIBITION PLACE





PLEASE NOTE:

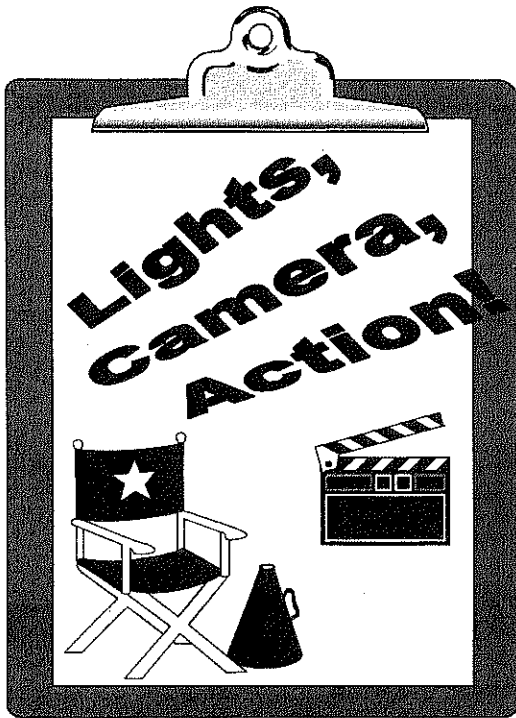
(*) Additional costs associated with street/grounds closures may include such costs as policing and staffing, barricades, and damages paid to the tenants of Exhibition Place and The National Trade Centre.

PREP & WRAP DAYS: a 25% rental rate reduction for prep & wrap days for film/photo location shoots of a duration of 14 days or less apply to The National Trade Centre, the Automotive Building, the Queen Elizabeth Exhibit Hall, the Horticultural Building and the Better Living Centre.

Please call your Film Liaison Representative for rental rates (including prep & wrap days) for film/photo location shoots in excess of 14 days.

3.) RENTAL RATES

Facility	2002 Price per sq. ft.	2002 Daily Rental Rate	Comments
NATIONAL TRADE CENTRE			- Off-season value rentals available. Call (416) 263-3023 for additional information. - Discount Prep & Wrap days by 25% of rental rate. - Facility rental rates are exclusive of GST. - All services, labour and material or equipment rentals are in addition to these Facility rental rates.
Hall A	\$0.11	\$13,750.00	
Hall B	\$0.11	\$11,812.90	
Hall C	\$0.11	\$ 6,414.65	
Hall D	\$0.11	\$ 7,450.08	
Heritage Court	\$0.11	\$ 4,084.30	
Hall E	\$0.06 – 1 st Floor \$0.035 – 2 nd Floor	\$ 3,240.00 \$ 1,330.00	
Coliseum	N/A	\$ 5,000.00	
Galleria	\$1.00	Based on immediate usage of filming/set space	
Hall F	\$0.06 – 1 st Floor \$0.035 – 2 nd Floor	\$ 3,360.00 \$ 1,330.00	
Hall G	\$0.09	\$ 9,990.00	
AUTOMOTIVE	\$0.09 – 1 st Floor \$0.045 – 2 nd Floor	\$10,710.00 \$ 1,935.00	- Off-season value rentals available. Call (416) 263-3606 for additional information - Discount Prep & Wrap days by 25% of rental rate - Facility rental rates are exclusive of GST - All services, labour and material or equipment rentals are in addition to these Facility rental rates.
QE EXHIBIT HALL	\$0.09	\$ 5,670.00	
QE THEATRE (MAT. & EVE)	Flat rate - \$2650.00	\$ 2,650.00	
QE THEATRE (MAT. OR EVE)	Flat rate - \$2100.00	\$ 2,100.00	
BETTER LIVING CENTRE	\$0.085	\$17,357.00	
BANDSHELL	Flat rate - \$2,750.00	\$ 2,750.00	
BANDSHELL RESTAURANT	Flat rate - \$750.00	\$ 750.00	
HORTICULTURE BUILDING	\$0.075	\$ 2,250.00	
GROUNDS (without closures)	\$0.02	\$0.02 sf	
GROUNDS (with street/grounds closure)	\$0.02 plus all costs for closures (*)	\$0.02 sf plus all costs for closures (*)	
PARKING - non-peak (based on location)	\$6.50/\$7.00/\$9.00 vehicle	Note: subject to availability	Contract rates available for extended use and for productions that are not shooting on the site
PARKING-peak (based on location)	\$9.00-\$11.00/vehicle	Note: subject to availability	



Exhibition Place and The National Trade Centre have a collective agreement with I.A.T.S.E. Local 58.

Other collective agreements which must be recognized include: CUPE Local 2840, CAW Local 27, IBEW Local 353, Labourers' International Union of North America Local 506, Painters and Allied Trades District Council 46, Plumbers and Pipefitters Local 46.

Please contact your Film Liaison Representative for details.

4.) I.A.T.S.E. & OTHER LABOUR RATES

I.A.T.S.E.

Exhibition Place (and The National Trade Centre) has a collective agreement with I.A.T.S.E. Local 58 and, from the 1970's until recently, I.A.T.S.E. Local 58 claimed jurisdiction over all filming conducted on the grounds (i.e.: motion pictures, commercials and television movies and features) in addition to its traditional work of stage, theatrical and concert productions. In the past, producers were required to use I.A.T.S.E. Local 58 pursuant to the Exhibition Place collective agreement and arrange for the provision of all unionized workers through Exhibition Place.

In November 2001, Exhibition Place (and The National Trade Centre) finalized a new collective agreement with I.A.T.S.E. Local 58, which resulted in the following changes:

- **I.A.T.S.E. Local 58 no longer has any jurisdiction over filming at Exhibition Place and The National Trade Centre**
- **Producers and production companies must now be a signatory to their own separate collective agreement with a studio mechanics union of one of the locals of I.A.T.S.E. in order to film at Exhibition Place and The National Trade Centre,**
- **Producers and production companies may use I.A.T.S.E. Local 58 if they are already a signatory to a collective agreement with I.A.T.S.E. Local 58, and producers and production companies are now required to deal directly with Local 58 for crew calls and for the provision of all labour required for filming at Exhibition Place**
- **Exhibition Place and The National Trade Centre is no longer able to provide I.A.T.S.E. labour to any producer or production company**
- **Exhibition Place and The National Trade Centre will not be a party to establishing or reviewing the terms and conditions of any collective agreements between any third party producer and an I.A.T.S.E. local**

Exhibition Place and The National Trade Centre do require that all producers provide evidence of a collective agreement between the producer and one of the I.A.T.S.E. Locals as stated above before a License Agreement can be executed. Please contact your Film Liaison Representative if you have any questions or require any further information, or contact the Toronto Film and Television Office at (416) 392-7570.



EXHIBITION PLACE

OTHER LABOUR

In addition to its collective agreement with IATSE, Exhibition Place and The National Trade Centre have collective agreements with the following, and require that any work that is the work of union members represented by the following Councils or Brotherhood shall in every case be performed only by the employees of Exhibition Place or The National Trade Centre or by an employer bound by any of these collective agreements:

- (i) The Carpenters' Employer Bargaining Agency and The Ontario Provincial Council, United Brotherhood of Carpenters and Joiners of America;
- (ii) The Mechanical Contractors Association of Ontario and The Ontario Pipe Trades Council of the United Association of Journeymen and Apprentices of the Plumbing and Pipe-Fitting Industry of the United States and Canada;
- (iii) The Electrical Trade Bargaining Agency of the Electrical Contractors Association of Ontario and The International Brotherhood of Electrical Workers and the IBEW Construction Council of Ontario;
- (iv) Labour Relations Bureau of the Ontario General Contractors Association; Ontario Masonry Contractors Association; Industrial Contractors Association of Canada; Waterproofing Contractors Association of Ontario; Concrete Floor Contractors Association of Ontario; and The Labourers' International Union of North America and the Labourers' International Union of North America, Ontario Provincial District Council, on behalf of its affiliated Local Unions 183, 247, 491, 493, 506, 527, 607, 625, 837, 1036, 1059, 1081 and 1089;
- (v) The Ontario Painting Contractors Association, Acoustical Association Ontario, Interior Systems Contractors Association of Ontario and The International Brotherhood of Painters and Allied Trades and The Ontario Council of the International Brotherhood of Painters and Allied Trades; and,
- (vi) The Canadian Union of Public Employees, Local 2840 (Parking Services).

LABOUR RATES:

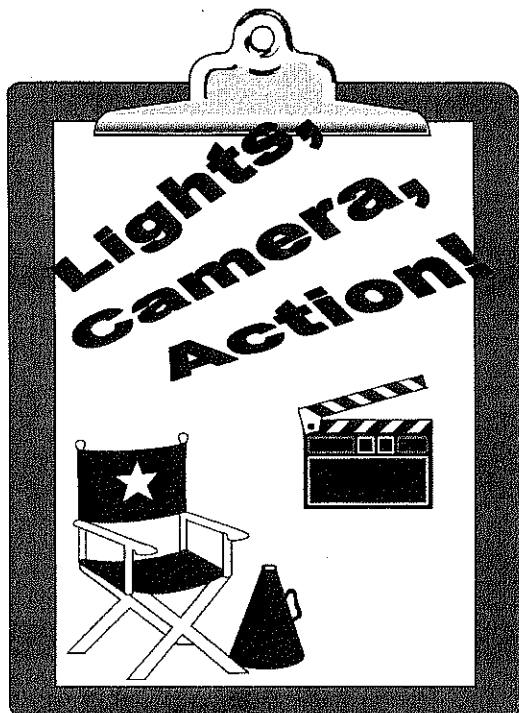
	Straight Time	Time and a half	Double Time	Premiums
Carpenters (per hour)	\$53.00 Monday to Friday (7.5 hour shift)	\$79.50 (Monday to Friday over 7.5 hour shift, Saturday and Sunday all day and holidays)	n/a	\$1.50 per hour for all shifts beginning outside of regular hours (8am - 4pm)
Plumbers/ HVAC (per hour)	\$63.00 Monday to Friday (7.5 hour shift)	n/a	\$124.50 (Monday to Friday over 7.5 hour shift, Saturday, Sunday and holidays)	n/a
Electricians (per hour)	\$69.00 Monday to Friday (7.5 hour shift)	n/a	\$116.50 (Monday - Friday) over 7.5 hour shift, Saturday, Sunday and holidays	n/a
General Labour (per hour)	\$48.00 Monday to Friday (7.5 hour shift)	\$72.00 (Monday to Friday first 3 additional hours after 7.5 hour shift, Saturday and Sunday 7.5 hour shift)	\$96.00 (Monday to Friday after 10.5 hours, Saturday and Sunday over 7.5 hour shift and holidays)	\$1.40 per hour for all shifts beginning outside of regular hours (8am - 4pm)
Cleaners (per hour)	\$16.25 to \$49.75 Monday to Friday (7.5 hour shift)	(Monday to Friday first 3 additional hours after 7.5 hour shift, Saturday and Sunday 7.5 hour shift)	(Monday to Friday after 10.5 hours, Saturday and Sunday over 7.5 hour shift and holidays)	\$1.40 per hour for all shifts beginning outside of regular hours (8am - 4pm)
Painters (per hour)	\$51.50 Sunday to Saturday (7.5 hour shift)	n/a	\$103.00 (Sunday to Saturday hours of 7.5 hour shift and holidays all day)	n/a
Parking (per hour)	\$16.00 to \$21.50 Sunday to Saturday (7.5 hour shift)	(Sunday to Saturday all work after 7.5 hour shift)	n/a	n/a

Your Film Liaison Representative or Event Coordinator can answer any questions that you may have and help you to determine when jurisdictions are in force and what additional costs you may expect for your production.



EXHIBITION PLACE





5.) CATERING & CRAFT SERVICES

CATERING

Exhibition Place and its authorized agent(s) retain the exclusive right to provide any catering and all food and beverage of any kind and to retain all revenue derived from the sale of these. Exhibition Place and its authorized agent(s) reserve the right of first refusal for all **"Second Meals"**. If Exhibition Place or its agent(s) refuses or cannot meet the service requirements of the "Second Meal", production companies will be allowed to procure the meal from another source.

For your convenience, we have included several menu samples in this package and our caterer will be pleased to create a customized menu to meet your specific requirements. Please feel free to contact them directly at (416) 263-3522, or speak with your Film Liaison Representative.

CRAFT SERVICES

Craft services are permitted at Exhibition Place and The National Trade Centre, however, they are to be limited to beverages and light snacks. Light snacks for the purpose of this document are described as foods to be consumed between meal periods that in no way could be deemed a meal. These foods usually consist of cold foods that are wrapped and or put together in a short period of time. These foods usually do not include hot food items.

Any Craft Services provided by a source other than Exhibition Place and its authorized agent(s) must be approved in advance. Please supply a copy of your Craft Services menu to your Event Coordinator for approval well in advance of your possession dates.

If such approval is not obtained, production companies will be held accountable for all penalty fees.

Sample Menus for Location Film Shoots

Basic Room Set-Up – \$285.00 – based on 50 people:

- 5 – 72” rounds
- 5 – 120” basic white linen
- 50 chairs
- Labour to set and strike

Please note that the basic room set-up is only available with food order

Breakfast – \$11.00 per person – based on 50 people

- Scrambled Eggs
- Bacon or Sausage
- Hash browns
- Sliced Fruit
- Breakfast Pastries

Includes 8’ tables for buffet and room cleaning charges

Additional Requirements: Wastebaskets – please see Event Coordinator

Lunch Buffet Option One – \$18.00 per person – based on 50 people:

- Mixed Greens with Cherry Tomatoes and Balsamic Dressing
- Potato Salad with Bacon & Cheddar Dressing
- Pasta Salad
- Rolls and Butter
- Chicken Cacciatore
- Bow-tie Pasta with Garden Vegetables and Garlic Herb Olive Oil
- Beef Stir-fry with Shitake Mushrooms in Oyster Sauce, Rice
- Market Fresh Vegetables
- Fresh Sliced Fruit
- Carrot Cake, Bite Size Sweets and Cookies

Includes 8’ tables for buffet and room cleaning charges

Additional Requirements: Wastebaskets – please see Event Coordinator

Lunch Buffet Option Two – \$18.00 per person – based on 50 people:

- Mixed Greens with Cherry Tomatoes and Balsamic Dressing
- Grilled Vegetable Salad
- New Orleans Spinach Salad, Bacon Dressing
- Rolls and Butter
- Grilled Breast of Chicken, Red Onion Marmalade
- Vegetarian Lasagna
- Market Fresh Vegetables, Roasted Potatoes
- Fresh Sliced Fruit
- Chocolate Fudge Gateau, Bite Size Sweet and Cookies

Includes 8’ tables for buffet and room cleaning charges

Additional Requirements: Wastebaskets – please see Event Coordinator

Lunch Buffet Option Three – \$13.75 per person – based on 50 people:

- Salad with Assorted Dressings
- Meat Lasagna
- Bow-tie Pasta with Garden Vegetables, Garlic Herb Olive Oil
- Rolls and Butter
- Whole Fruit or Cookies

Includes 8’ tables for buffet and room cleaning charges

Additional Requirements: Wastebaskets – please see Event Coordinator

Lunch Buffet Option Four – \$13.75 per person – based on 50 people:

- Mixed Greens with Cherry Tomatoes and Balsamic Dressing
- Beef Stir-fry with Shitake Mushrooms in Oyster Sauce
- Linguine with Garden Vegetables, Tomato Basil Sauce
- Rolls and Butter
- Whole Fruit or cookies

Includes 8’ tables for buffet and room cleaning charges

Additional Requirements: Wastebaskets – please see Event Coordinator



EXHIBITION PLACE



Sample Menus for Location Film Shoots

Sandwich Buffet – \$11.25 per person – based on 50 people:

- One Sandwich per person (Turkey, Roast Beef, Tuna or Vegetarian)
- ***Salad – Chef's choice***
- Soup – Chef's choice
- Brownies

Includes 8' tables for buffet and room cleaning charges

Additional Requirements: Wastebaskets – please see Event Coordinator

Bagged Lunch – \$9.00 per person – based on 50 people:

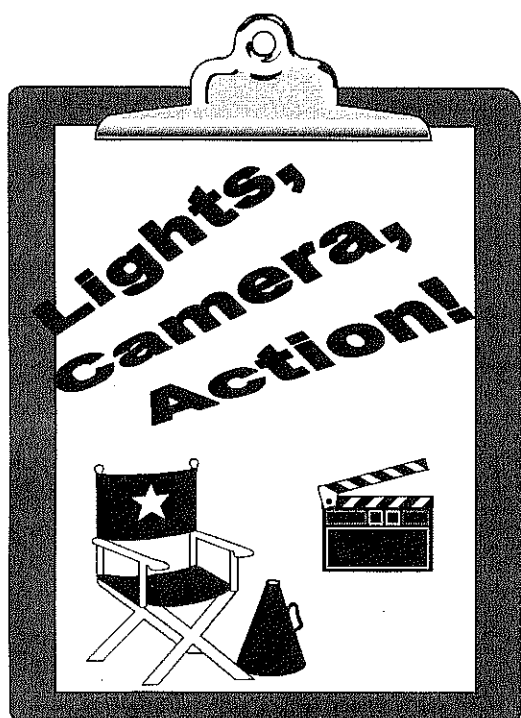
- One Sandwich (Turkey, Roast Beef, Tuna or Vegetarian)
- ***Pasta Salad***
- One piece of fruit
- One cookie

Includes delivery only, no room set-up



EXHIBITION PLACE





6.) EXHIBITION PLACE

EXHIBITION PLACE is a unique site that is situated along the shores of Lake Ontario immediately west of downtown Toronto. Consisting of approximately 192 acres of parkland with many historical buildings and structures that are owned by the City of Toronto and managed by the Board of Governors of Exhibition Place (the "Board of Governors") under the provisions of the *City of Toronto Act*, Exhibition Place is venue to more than 100 special events, and trade and consumer shows annually.

Eighteen individual buildings situated throughout the grounds range in size from 5,000 sf to 1,000,000 sf, are home to both permanent tenants and activities, or are available for rent. The facilities that are available for rent include an indoor theatre and two outdoor concert stages, as well a number of historic landmarks such as the Princes' Gates and Peace Fountain. Thirty-three acres of high quality parkland that include the historic Rose Gardens along Lake Shore Boulevard complete the inventory of this very unique location.

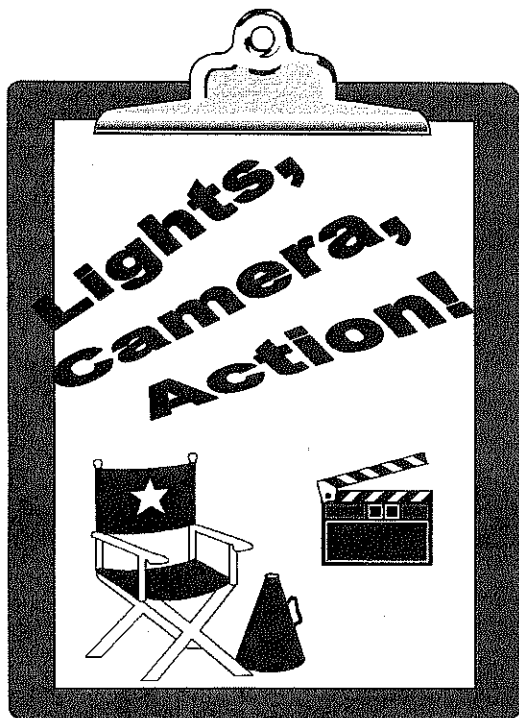
Permanent tenants include: Medieval Times, a themed restaurant/entertainment venue in the Arts & Crafts Building; Liberty Grand Entertainment Complex a corporate event and banquet facility operated by the Liberty Entertainment Group in the Ontario Government Building; Mounted Police Headquarters in the Horse Palace; a riding academy also located in the Horse Palace; TradeLink in The National Trade Centre; Canada's Sports Hall of Fame in the Halls of Fame Building; Immersion Studios in the Music Building.

Major facilities such as the Metro Toronto Convention Centre, the world-famous CN Tower, the Skydome (home to the Toronto Blue Jays) and the Air Canada Centre (home to the Toronto Maple Leafs and Toronto Raptors) are situated along the ten minute drive from Exhibition Place to the downtown core, and Ontario Place, a 110 acre water theme and attractions park is located directly across Lake Shore Boulevard from the site.

For more information, visit our web site at www.explace.on.ca.



EXHIBITION PLACE

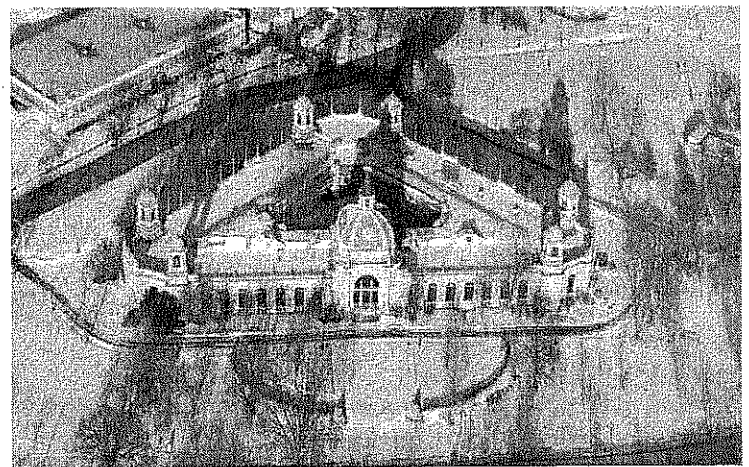
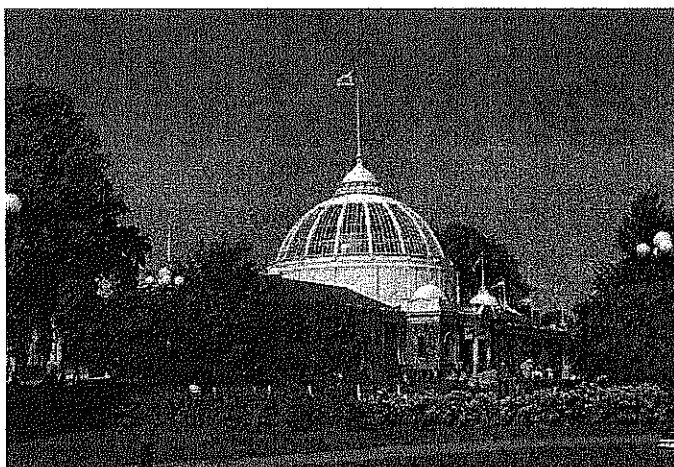
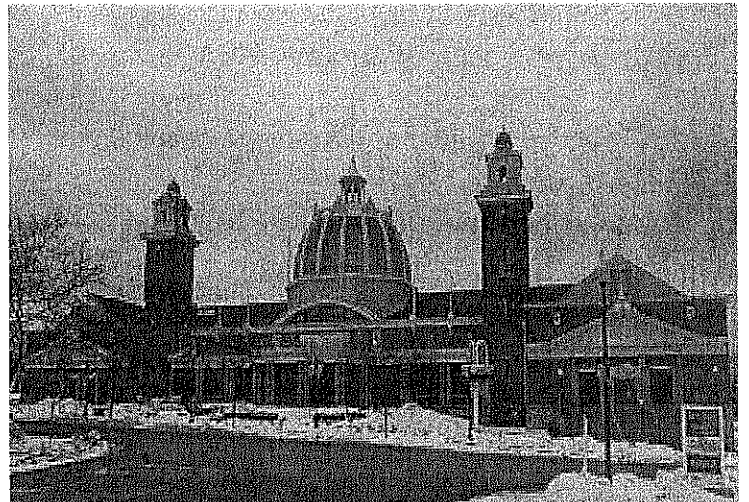


EXHIBITION PLACE is a unique site that is situated along the shores of Lake Ontario immediately west of downtown Toronto. Its 192 acres feature thirty-three acres of high quality parkland and many unique buildings and structures.

Seventeen of these buildings/structures are listed with Heritage Toronto (representing almost half of Heritage Toronto's entire inventory).

Seven of these buildings/structures are also designated under Ontario Heritage Act.

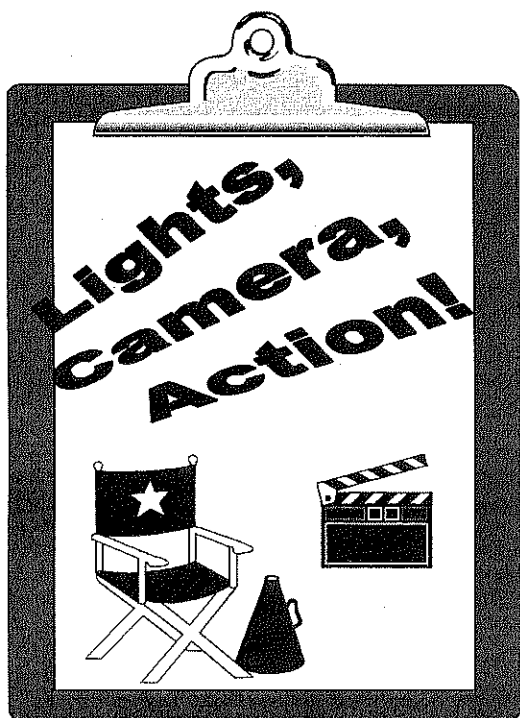
EXHIBITION PLACE



Of the five unique structures on the site that were designed by G.W. Gouinlock, the Horticulture Building (bottom left photo) is recognized as a significant example of early exhibition architecture, and is also listed within the inventory of Heritage Toronto. Gouinlock also designed the Arts & Crafts Building (top right photo) (presently home to Medieval Times Dinner & Tournament), as well as the Press Building, the Music Building and the Fire Hall / Police Station (not illustrated). An excellent example of 1920's architecture reflecting the Beaux Arts style can be found in The Ontario Government Building (bottom right photo, presently home to The Liberty Entertainment Complex), and in structures such as the Princes' Gates (top left photo).



EXHIBITION PLACE

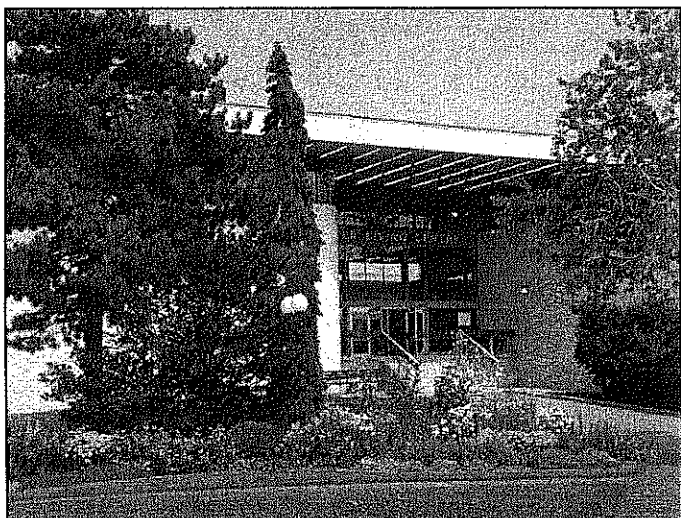


EXHIBITION PLACE is a unique site that is situated along the shores of Lake Ontario immediately west of downtown Toronto. Its 192 acres feature thirty-three acres of high quality parkland and many unique buildings and structures.

Seventeen of these buildings/structures are listed with Heritage Toronto (representing almost half of Heritage Toronto's entire inventory).

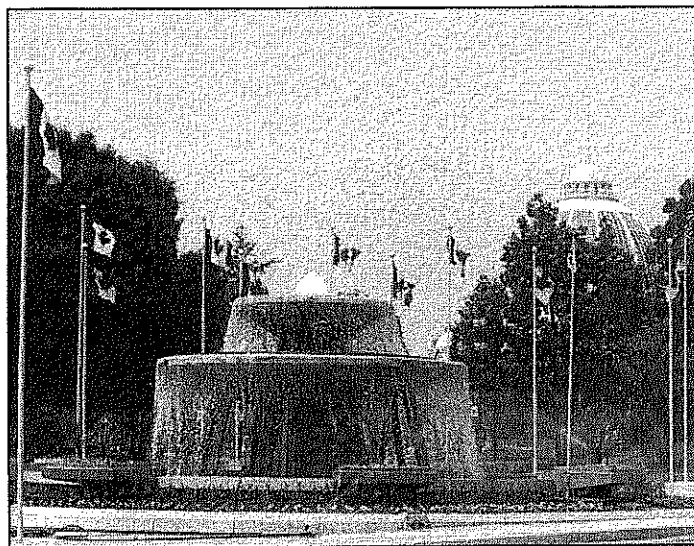
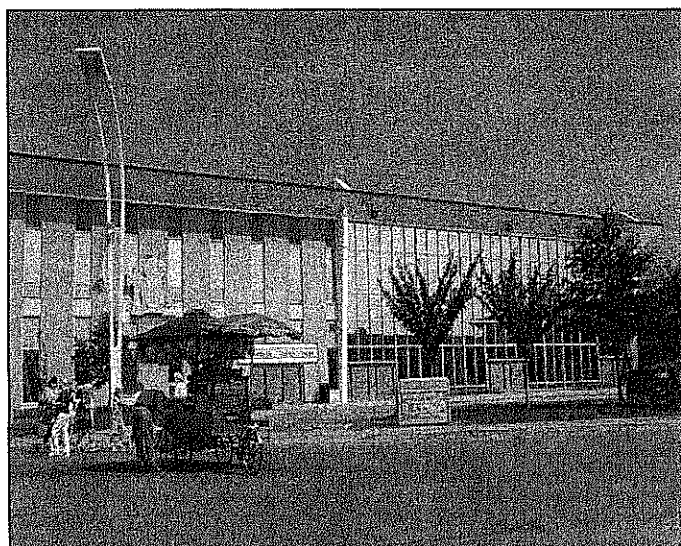
Seven of these buildings/structures are also designated under Ontario Heritage Act.

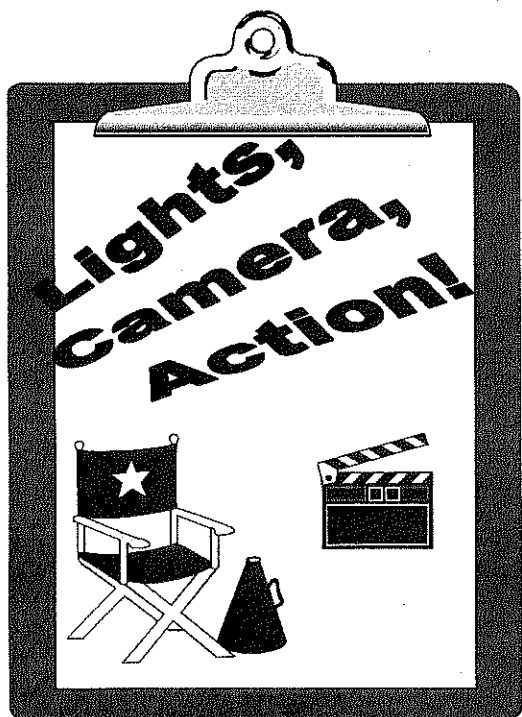
EXHIBITION PLACE



Other examples of unique architecture at Exhibition Place include The Better Living Centre (top left photo) and the Queen Elizabeth Building (bottom left photo) which houses a 63,000 square foot exhibit hall, a 1,300 seat theatre, banquet facilities, and the administration offices of Exhibition Place all in one very unique building envelope.

Other unique structures include the Princess Margaret Fountain (below), one of three outstanding outdoor fountains, and Scadding Cabin (not illustrated), one of the oldest structures in Toronto.



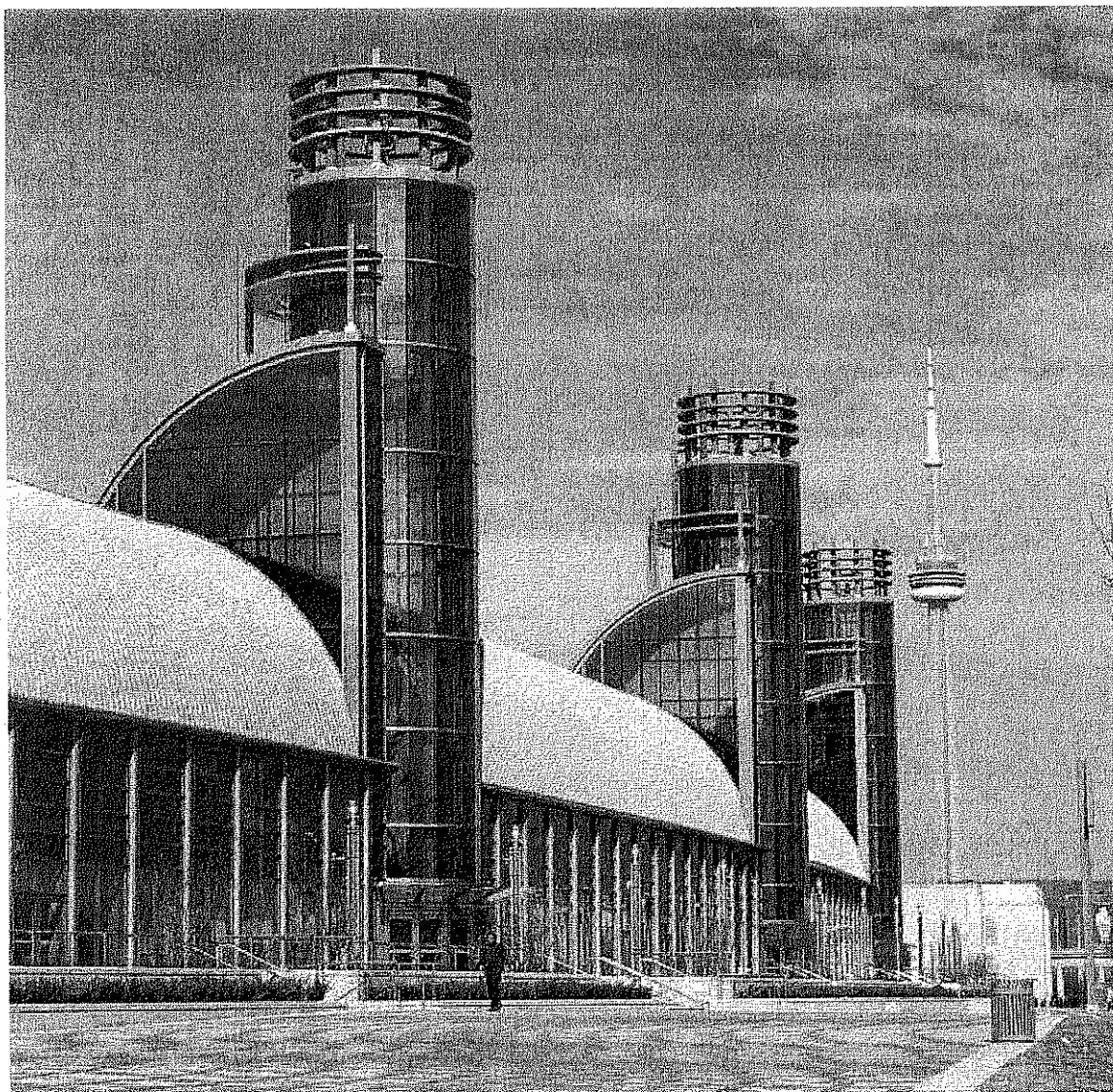


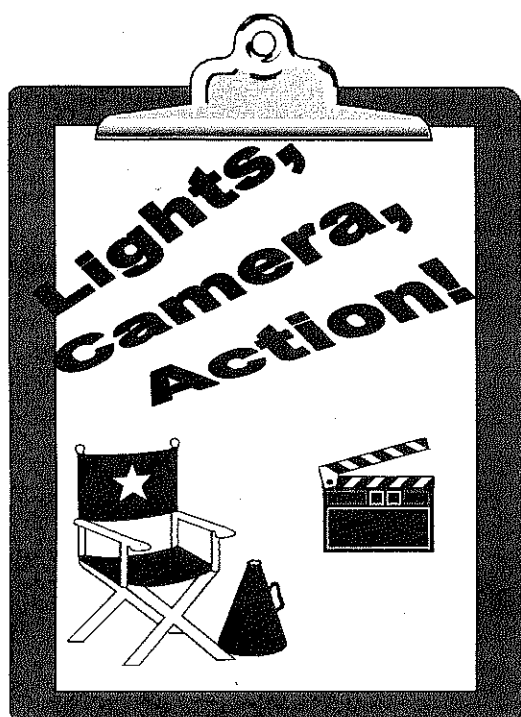
Located just inside the Princes' Gates at the east end of the celebrated Exhibition Place grounds, The National Trade Centre is a landmark complex combined of newly upgraded historical facilities and new, state-of-the-art exhibit halls and meeting rooms.

This unique pairing of the old with the new is evident in its square but elegant neoclassicism architecture mirroring the Automotive Building at the east end of the facility which gives way to a futuristic blend of circles and curves and its four glass beacons at the western section of the building.

In the sections that follow, we have included some specific information about the most popular film/photo location sites located within The National Trade Centre Complex, including The Galleria, Heritage Court, the Coliseum Arena and the Automotive Building..

THE NATIONAL TRADE CENTRE COMPLEX





The following celebrities have visited our facility during the production of such films as:

"Between Strangers" starring Sophia Loren and written and directed by her son, Edoardo Ponti

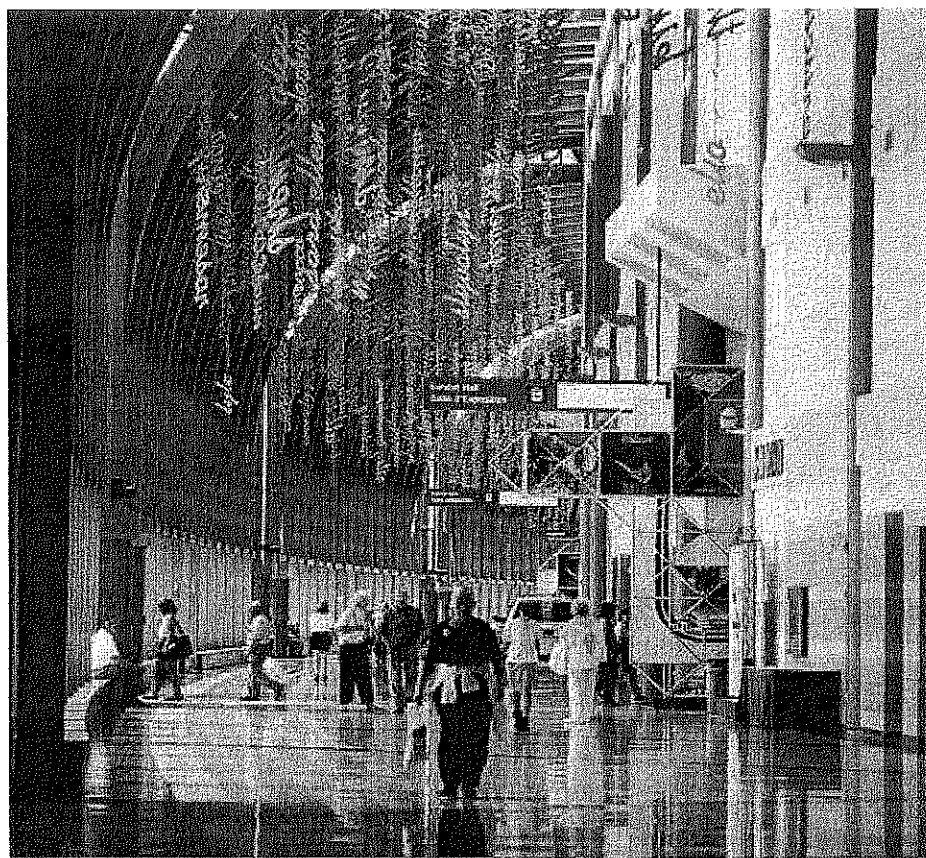
"Ararat" starring Charles Aznavour and Arsinee Khanjian, directed by Atom Egoyan

"D2K" starring Christopher Plummer

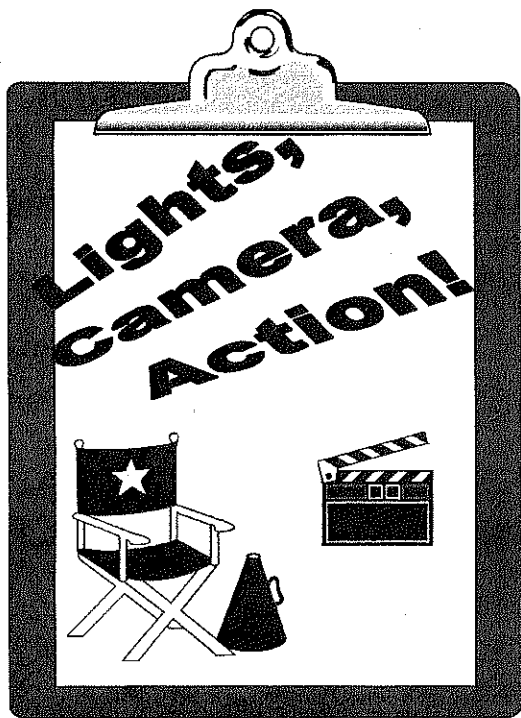
"Cool Dry Place" starring Vince Vaughan

Our facility has also been the site of several commercial shoots including ones for Budweiser, Scope, AT & T, Cantel, Sprint, Fidelity Mutual and Rogers AT & T.

THE NATIONAL TRADE CENTRE COMPLEX



The Galleria – a brightly-lit glass enclosed atrium running the entire length of the new exhibit halls of The National Trade Centre. This space has been used on several occasions as the backdrop for an airport terminal.

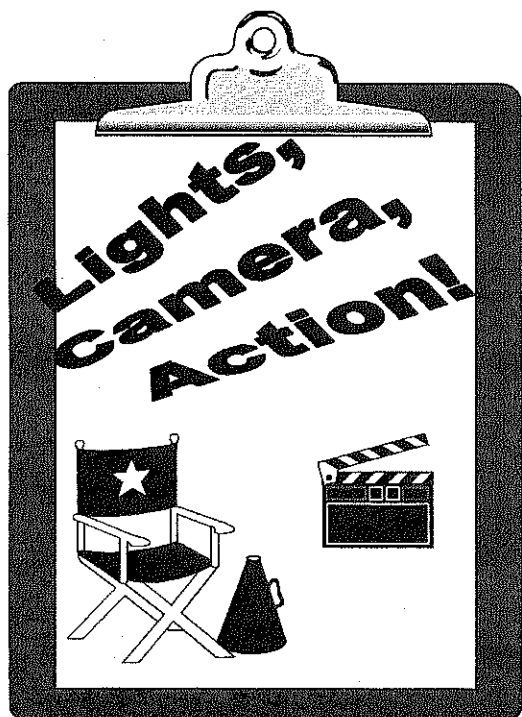


A four-week film shoot took place in the Coliseum of The National Trade Centre during the months of May and June 1998. Universal Studio's feature length comedy starring Kelsey Grammar, called "The New Jersey Turnpikes" takes a satirical behind the scenes look at the ABA in 1975.

THE NATIONAL TRADE CENTRE COMPLEX

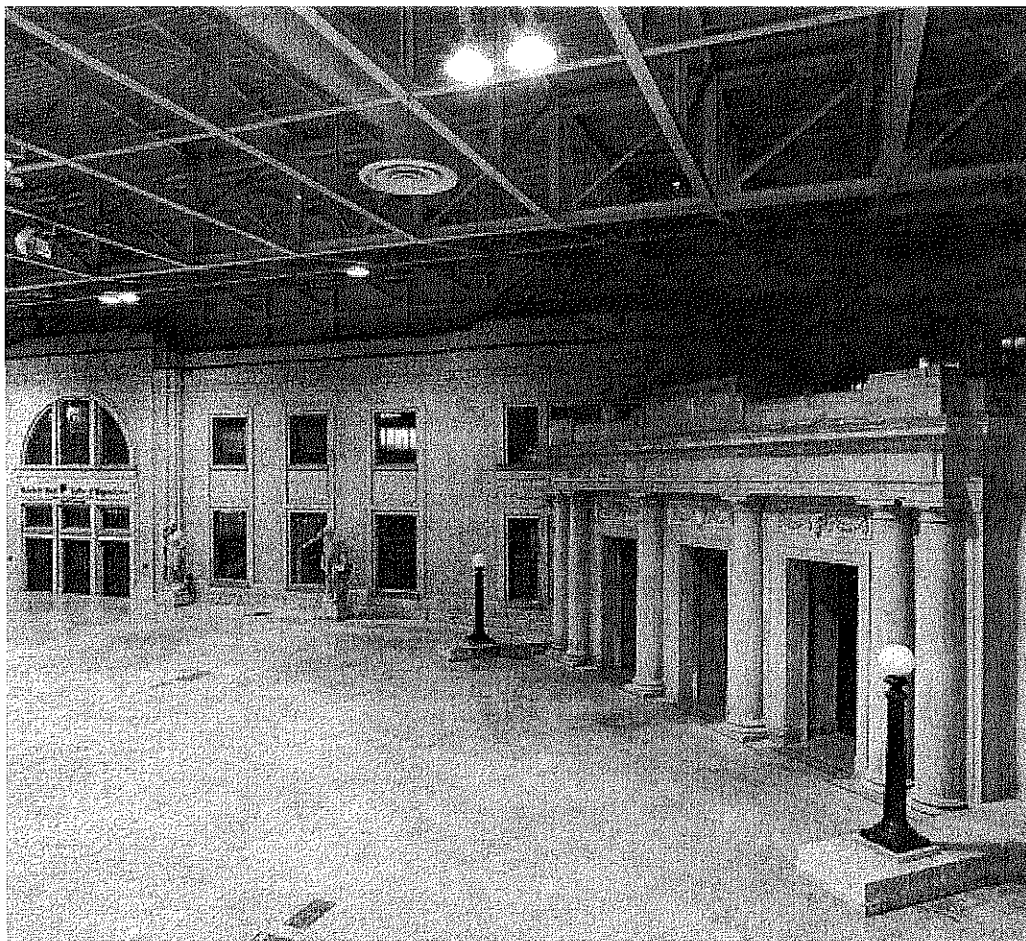


The Coliseum Arena – a 6,200-seat arena that is ideal for sporting or concert scenes.



One of the very first television commercial shoots in the history of this facility staged an indoor streetscape scene in Heritage Court for "Crunch 'n Munch" cereal bar. The scene was an evening set, with the elements of Fall including rain and plenty of leaves along with a car parked in the front of the columns and the windows backlit, presenting a very authentic exterior.

THE NATIONAL TRADE CENTRE COMPLEX



Heritage Court – a unique space, featuring the restored 1930 façade of the Coliseum building, is an ideal location for an indoor streetscape scene – a handy space that is most appropriate for filming in uncertain, inclement weather and winter conditions.