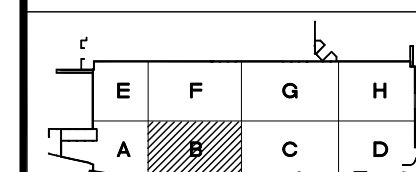


FOR CONTINUATION SEE DWG. E-213

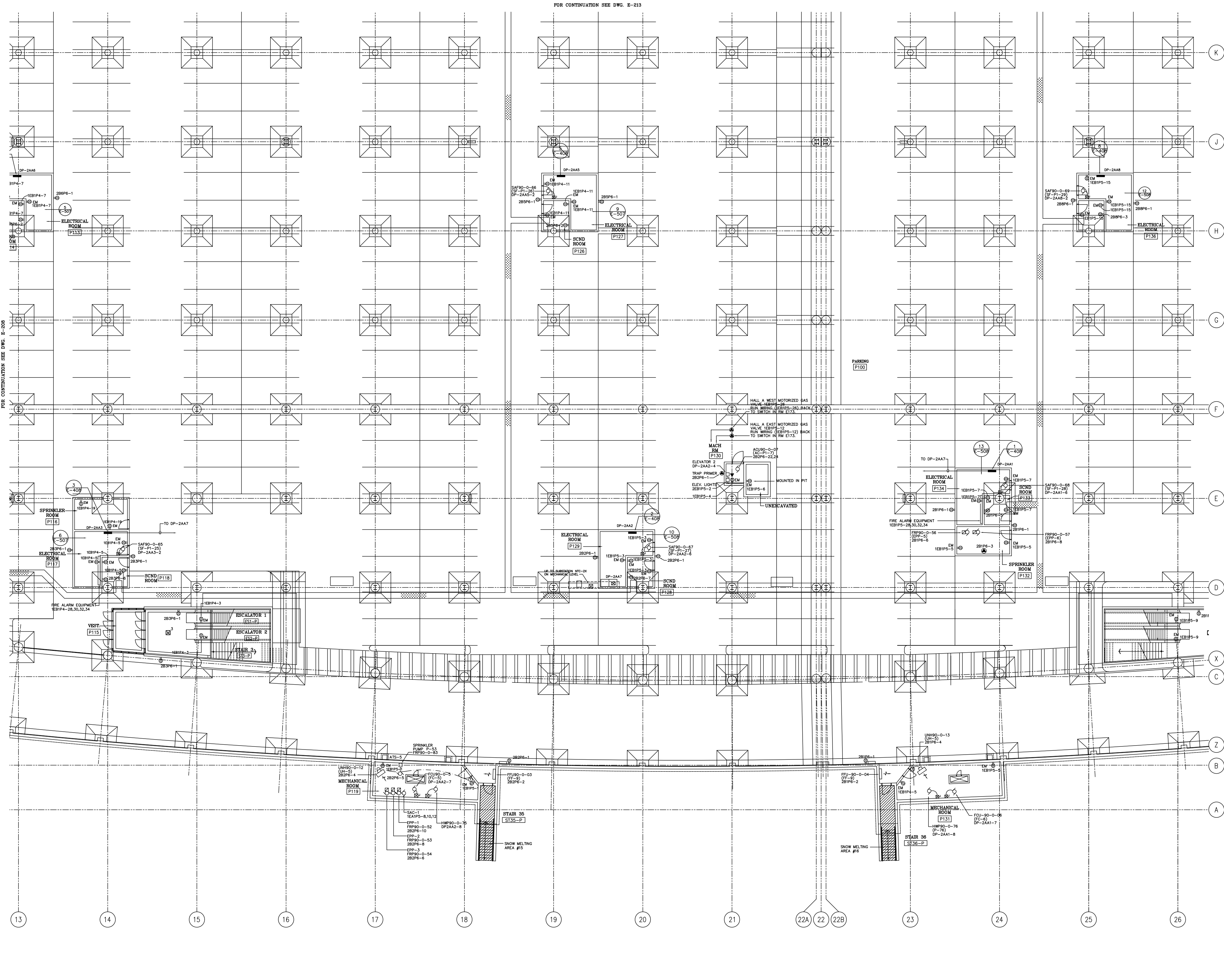


NOTES:  
REVISED TO INCORPORATE FIELD INSTRUCTIONS, CHANGE ORDERS AND AS-BUILT INFORMATION SUPPLIED BY THE CONTRACTOR.

CERTIFIED AS BUILT  
Univex (Ontario) Limited  
*[Signature]*  
February 28, 1997

FOR CONTINUATION SEE DWG. E-206

FOR CONTINUATION SEE DWG. E-210



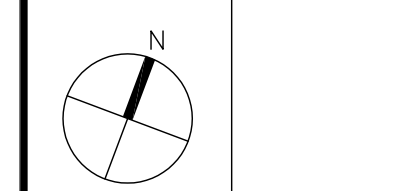
No.	Revisions	Date	By
15	ADDITIONAL CONTRACTOR'S COMMENTS	MAY 13/97	C.V.B.
14	RECORD DRAWING	FEB 28/97	C.V.B.
13	UPDATED TO F7'S UP TO 4 INCLUDING #6-9	JAN 10/97	C.V.B.
12	UPDATED TO F7'S UP TO 4 INCLUDING #6-9	NOV 15/96	C.V.B.
11	GENERAL REVISION INCLUDES UP TO FIELD INSTRUCTION #E-33	JUL 29/96	C.V.B.
10	FIELD INSTRUCTION #E-15	MAY 30/96	C.V.B.
9	FIELD INSTRUCTION #E-14	MAY 13/96	C.V.B.
8	FIELD INSTRUCTION #E-11	APR 29/96	C.V.B.
7	ISSUED FOR FIELD INSTRUCTION #E-09	MAR 16/96	C.V.B.
6	ISSUED FOR CONSTRUCTION	FEB 28/96	C.V.B.
5	ISSUED FOR BUILDING PERMIT	MAR 16/96	C.V.B.
4	ISSUED FOR PROGRESS REVIEW	DEC 21/95	C.V.B.
3	ISSUED FOR PROGRESS REVIEW	DEC 7/95	C.V.B.
2	ISSUED FOR PROGRESS REVIEW	SEPT 7/95	C.V.B.
1	ISSUED FOR REVIEW	AUG 31/95	C.V.B.

CONTRACTOR MUST CHECK AND VERIFY ALL DIMENSIONS ON THE JOB. THIS DRAWING SHALL NOT BE USED FOR CONSTRUCTION PURPOSES UNLESS COUNTERSIGNED BY:



Carroll Durr Rogers Engineering Inc.  
Consulting Engineers  
100 Victoria Park Ave., (416) 776-1100  
North York, Ontario M2H 2C2  
Canada 226-6949 E.M. (416) 776-1100

NATIONAL TRADE CENTRE  
AT  
EXHIBITION PLACE



Drawn  
D.T./S.B./D.G.  
Scale  
1:125  
Checked  
C.V.B.  
Date  
APRIL 95

P1 LEVEL PLAN  
BLOCK 'B'  
POWER & SYSTEMS

Project No.  
NTC-C-201  
Drawing No.  
E-209

EXHIBITION PLACE