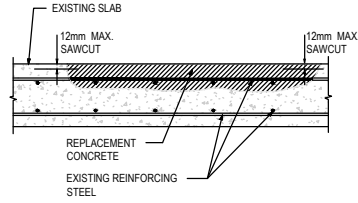


1 THROUGH-SLAB CONCRETE REPAIR
S1-01 NTS

NOTES:

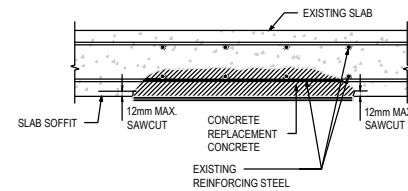
1. PROVIDE TEMPORARY SHORING TO SAFELY SUPPORT SLAB.
2. SAWCUT SURFACE PERIMETER (MAX. 12mm, DO NOT CUT BARS)
3. REMOVE ALL LOOSE AND UNSOUND CONCRETE.
4. SAWCUT SOFFIT PERIMETER AND REMOVE EXCESS CONCRETE.
5. RE-TIE EXPOSED REINFORCING STEEL AS REQUIRED.
6. REINFORCE SEVERELY CORRODED OR DAMAGED REINFORCING STEEL AS DIRECTED BY CONSULTANT.
7. CLEAN CONCRETE AND EXPOSED REINFORCING STEEL.
8. PROVIDE FORMWORK TO SAFELY SUPPORT CONCRETE REPAIR.
9. WET DOWN CONCRETE FOR MIN. 12 HOURS PRIOR TO PLACING CONCRETE.
10. COAT CONCRETE WITH CEMENTITIOUS SLURRY.
11. SUPPLY AND PLACE CONCRETE.
12. FINISH AND WET CURE CONCRETE.
13. REMOVE TEMPORARY SHORING AFTER REPLACEMENT CONCRETE HAS ATTAINED 75% OF ITS SPECIFIED 28 DAY STRENGTH OR AFTER 7 DAYS, WHICHEVER OCCURS LATER.
14. REPAINT SLAB SOFFIT, TO MATCH EXISTING.



2 TOPSIDE CONCRETE REPAIR
S1-01 NTS

NOTES:

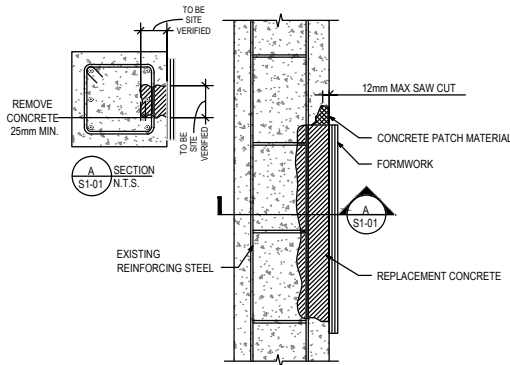
1. PROVIDE TEMPORARY SHORING TO SAFELY SUPPORT SLAB.
2. SAWCUT SURFACE PERIMETER (MAX. 12mm, DO NOT CUT BARS)
3. REMOVE ALL LOOSE AND UNSOUND CONCRETE.
4. RE-TIE EXPOSED REINFORCING STEEL AS REQUIRED. PROVIDE 25mm CLEARANCE AROUND ALL EXPOSED REINFORCING STEEL.
5. REINFORCE SEVERELY CORRODED OR DAMAGED REINFORCING STEEL, AS DIRECTED BY THE CONSULTANT.
6. CLEAN CONCRETE AND EXPOSED REINFORCING STEEL.
7. WET DOWN CONCRETE FOR MIN. 12 HOURS PRIOR TO PLACING CONCRETE.
8. COAT CONCRETE WITH CEMENTITIOUS SLURRY.
9. SUPPLY AND PLACE CONCRETE.
10. FINISH AND WET CURE.
11. REMOVE TEMPORARY SHORING AFTER REPLACEMENT CONCRETE HAS ATTAINED 75% OF ITS SPECIFIED 28 DAY STRENGTH OR AFTER 7 DAYS, WHICHEVER OCCURS LATER.



3 SOFFIT CONCRETE REPAIR
S1-01 NTS

NOTES:

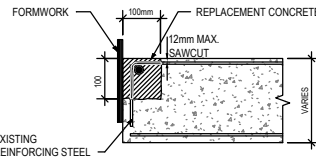
1. PROVIDE TEMPORARY SHORING TO SAFELY SUPPORT SLAB.
2. SAWCUT SOFFIT PERIMETER (MAX. 12mm, DO NOT CUT BARS).
3. REMOVE ALL LOOSE AND UNSOUND CONCRETE.
4. RE-TIE EXPOSED REINFORCING STEEL AS REQUIRED. PROVIDE 25mm CLEARANCE AROUND ALL EXPOSED REINFORCING STEEL.
5. REINFORCE SEVERELY CORRODED OR DAMAGED REINFORCING STEEL, AS DIRECTED BY CONSULTANT.
6. CLEAN CONCRETE AND EXPOSED REINFORCING STEEL.
7. WET DOWN CONCRETE FOR MINIMUM 12 HOURS PRIOR TO POLY MODIFIED MORTAR PLACEMENT.
8. SUPPLY, PLACE, FINISH AND CURE POLYMER MODIFIED MORTAR AS DIRECTED.
9. REMOVE TEMPORARY SHORING AFTER REPLACEMENT CONCRETE HAS ATTAINED 75% OF ITS SPECIFIED 28 DAY STRENGTH OR AFTER 7 DAYS, WHICHEVER OCCURS LATER.
10. REPAINT SLAB SOFFIT, TO MATCH EXISTING.



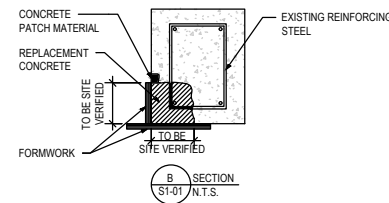
4 VERTICAL CONCRETE REPAIR
S1-01 NTS

NOTES:

1. ALL VERTICAL REPAIRS REQUIRE SHORING. PROVIDE SHORING DRAWINGS FOR ALL VERTICAL CONCRETE REMOVALS AND MAINTAIN SHORING UNTIL REPAIR MATERIAL HAS ATTAINED 75% OF ITS SPECIFIED 28-DAY STRENGTH. THE SHORING ENGINEER IS TO REVIEW THE STRUCTURAL DRAWINGS PRIOR TO DESIGNING THE SHORING (NOTE THAT MANY VERTICAL ELEMENTS CONTAIN MINIMAL OR UNIQUE REINFORCING). IN LOCATIONS WHERE SHORING IS NOT REQUIRED, PROVIDE A LETTER FROM THE SHORING ENGINEER TO THIS EFFECT.
2. DO NOT REMOVE CONCRETE DEEPER OR IN WIDTH GREATER THAN THE ALLOWABLE LIMITS INDICATED ON THE SHORING DRAWINGS.
3. DO NOT REMOVE MORE OF THE CROSS-SECTIONAL AREA OF COLUMNS AND SHEAR WALLS THAN ALLOWED BY THE SHORING ENGINEER.
4. REMOVE AND REPLACE ALL CONCRETE WITHIN AREAS SHOWN HATCHED.
5. PROVIDE 25mm CLEARANCE AROUND ALL EXPOSED REINFORCING STEEL.
6. REINFORCING STEEL WHICH IS BADLY CORRODED SHALL BE REINFORCED AS DIRECTED BY CONSULTANT.
7. FIELD CONDITIONS MAY DIFFER FROM THE INFORMATION SHOWN ON THIS DETAIL (NUMBER AND LOCATION OF COLUMN AND WALL REINFORCING).
8. REMOVE TEMPORARY SHORING AFTER REPLACEMENT CONCRETE HAS ATTAINED 75% OF ITS SPECIFIED 28 DAY STRENGTH OR AFTER 7 DAYS, WHICHEVER OCCURS LATER.
9. REPAINT VERTICAL SURFACE, TO MATCH EXISTING.



5 BEAM EDGE CONCRETE REPAIR
S1-01 NTS



6 SLAB NOSING REPAIR
S1-01 NTS

NOTES:

1. PROVIDE TEMPORARY SHORING TO SAFELY SUPPORT SLAB.
2. REMOVE ALL LOOSE AND UNSOUND CONCRETE.
3. RE-TIE EXPOSED REINFORCING STEEL AS REQUIRED. PROVIDE 25mm CLEARANCE AROUND ALL EXPOSED REINF. STEEL.
4. REINFORCE SEVERELY CORRODED OR DAMAGED REINFORCING STEEL, AS DIRECTED BY THE CONSULTANT.
5. CLEAN CONCRETE AND EXPOSED REINFORCING STEEL.
6. PROVIDE FORMWORK TO SAFELY SUPPORT CONCRETE REPAIR.
7. SUPPLY, PLACE, FINISH AND CURE POLYMER MODIFIED MORTAR, AS DIRECTED BY THE CONSULTANT.

NOTES:

1. PROVIDE TEMPORARY SHORING TO SAFELY SUPPORT SLAB.
2. SAWCUT SURFACE PERIMETER (MAX. 12mm, DO NOT CUT BARS)
3. REMOVE ALL LOOSE AND UNSOUND CONCRETE.
4. SAWCUT SOFFIT PERIMETER AND REMOVE EXCESS CONCRETE.
5. RE-TIE EXPOSED REINFORCING STEEL AS REQUIRED.
6. REINFORCE SEVERELY CORRODED OR DAMAGED REINFORCING STEEL AS DIRECTED BY CONSULTANT.
7. CLEAN CONCRETE AND EXPOSED REINFORCING STEEL.
8. PROVIDE FORMWORK TO SAFELY SUPPORT CONCRETE REPAIR.
9. WET DOWN CONCRETE FOR MIN. 12 HOURS PRIOR TO PLACING CONCRETE.
10. COAT CONCRETE WITH CEMENTITIOUS SLURRY.
11. SUPPLY AND PLACE CONCRETE.
12. FINISH AND WET CURE CONCRETE.
13. REMOVE TEMPORARY SHORING AFTER REPLACEMENT CONCRETE HAS ATTAINED 75% OF ITS SPECIFIED 28 DAY STRENGTH OR AFTER 7 DAYS, WHICHEVER OCCURS LATER.
14. REPAINT SLAB SOFFIT, TO MATCH EXISTING.

NO	DATE	BY	REVISIONS
2	MAR 25, 2021		ISSUED FOR ADDENDUM
1	MAR 09, 2021		ISSUED FOR TENDER

CHECK AND VERIFY ALL DIMENSIONS ON THE JOB BEFORE PROCEEDING WITH ANY WORK. DRAWING MUST NOT BE SCALE.



THE BOARD OF GOVERNORS OF EXHIBITION PLACE
TORONTO, M6K 3C3



HALL 'A', WEST CORRIDOR AND LOADING DOCK RAMP RETROFFITS AT ENERCARE CENTRE, EXHIBITION PLACE

CONCRETE REPAIR DETAILS

DESIGN BY	DATE	SCALE
EK	MAR 25, 2021	N.T.S.
DRAWN BY	PROJECT NO	DRAWING NO
SB	21-076-17896	S1-01
CHECKED BY		
EK		

EXHIBITION PLACE